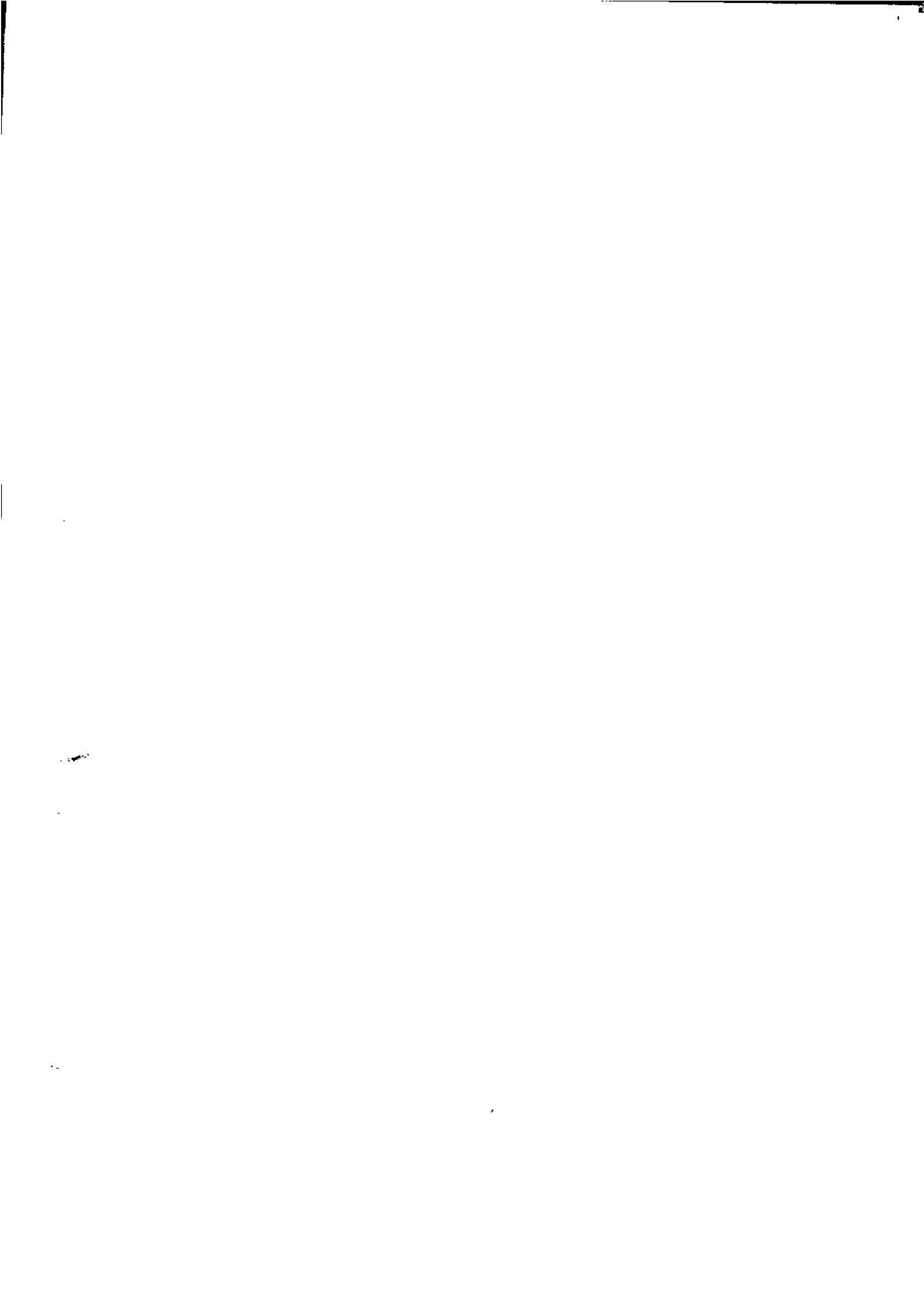




**Australian
Bureau of
Statistics**

**September Quarter 1993
Employed Wage and
Salary Earners
Australia**

Catalogue No. 6248.0



EMBARGOED UNTIL 11.30 A.M. 14 MARCH 1994

**EMPLOYED WAGE AND SALARY EARNERS
AUSTRALIA
SEPTEMBER QUARTER 1993**

**IAN CASTLES
Australian Statistician**

© Commonwealth of Australia 1994

CONTENTS

<i>Table</i>		<i>Page</i>
..	Summary of Findings	1
1	Employed wage and salary earners, States and Territories, persons — trend series	4
2	Employed wage and salary earners, States and Territories, persons — seasonally adjusted series	5
3	Employed wage and salary earners, States and Territories, persons — original	6
4	Gross Earnings, States and Territories, sectors — original	7
	Employed wage and salary earners—	
5	States and Territories, sectors — trend series	8
6	States and Territories, sectors — seasonally adjusted series	9
7	States and Territories, sectors — original	10
8	States and Territories, public institutional sector — original	11
9	Australia, public institutional sector and industry, persons — original	12
10	Australia, public institutional sector and industry, gross earnings — original	12
11	Full-time and part-time, August 1993 — original	13
12	Australia, industry — trend series	14
13	Australia, industry — seasonally adjusted series	14
14	Australia, sector and industry — original	15
15	New South Wales, sector and industry — original	18
16	Victoria, sector and industry — original	19
17	Queensland, sector and industry — original	20
18	South Australia, sector and industry — original	21
19	Western Australia, sector and industry — original	22
20	Tasmania, sector and industry — original	23
21	Northern Territory, industry — original	24
22	Australian Capital Territory, industry — original	24
23	Private sector, employer unit size — original	25
24	Pay periodicity by States and Territories, September Quarter 1992. Distribution of gross wages and salaries — original	26
..	Explanatory Notes	27

Appendixes

1	Technical Note	31
2	Glossary	34

INQUIRIES

- for further information about statistics in this publication and the availability of related unpublished statistics, contact Mr Errol Preston on Canberra (06) 252 6511 or any ABS State office.
- for information about other ABS statistics and services please refer to the back page of this publication.



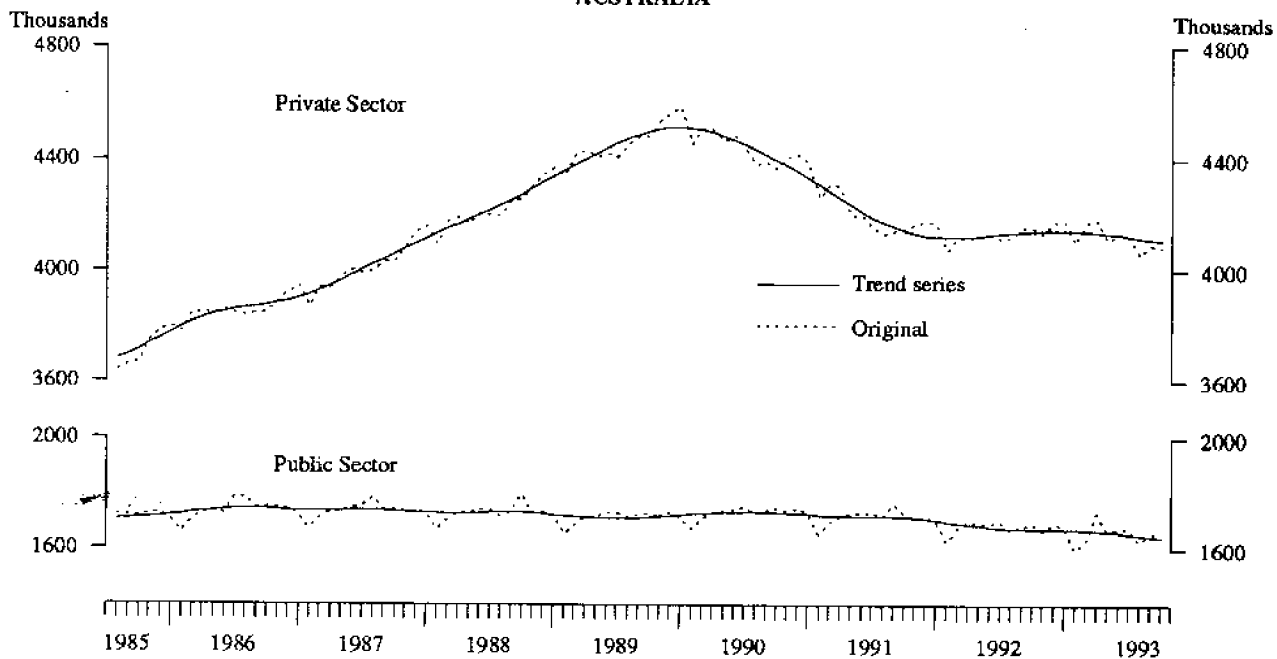
SUMMARY OF FINDINGS

Private and public sectors (Trend estimates)

Diagram 1 shows the estimated number of employed wage and salary earners in the private and public sectors. In the private sector the number of employees grew steadily to a peak of 4,516,900 in December 1989 and then fell steadily to a trough of 4,125,100 in January 1992. Since January 1992 the number of employees rose slightly to 4,148,800 in November 1992 and has since fal-

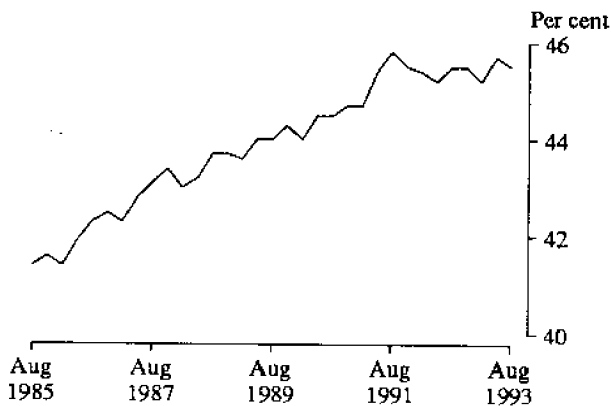
len slightly to 4,111,100 in September 1993. In the public sector the number of employees remained relatively steady over the five years to June 1990. It then fell steadily from 1,734,600 in June 1990 to 1,645,400 in September 1993.

DIAGRAM 1. EMPLOYED WAGE AND SALARY EARNERS, SECTORS AUSTRALIA



Source: See Tables 1 & 2.

DIAGRAM 2. FEMALE WAGE AND SALARY EARNERS AS A PERCENTAGE OF TOTAL, AUSTRALIA



Source: See Table 7.

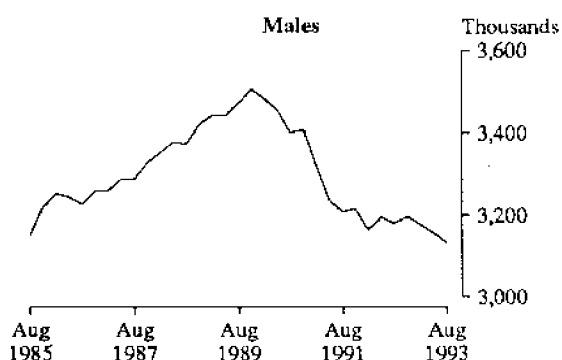
Male and female wage and salary earners (Original estimates)

Estimates of male and female wage and salary earners relate to the middle month of each quarter and are presented only in original terms rather than trend.

Diagram 2 shows the number of female wage and salary earners as a proportion of total wage and salary earners. Throughout the eight years from August 1985 to August 1993 this proportion has continued a steady rise from 41.4 per cent to 45.5 per cent.

Diagram 3 shows the number of male and female employees in Australia over the last eight years. The number of male employees rose by 354,700 from August 1985 to a peak of 3,508,600 in November 1989 and then fell by a similar number (375,600) to 3,133,000 in August 1993. The number of female employees also rose from August 1985 to a peak in November 1989 (2,793,200) and has subsequently fallen to 2,618,900 in August 1993. This represents a rise to November 1989 of 562,100 and a subsequent fall to August 1993 of 174,300.

DIAGRAM 3. EMPLOYED WAGE AND SALARY EARNERS AUSTRALIA



Source: See Table 7.

Full-time and part-time wage and salary earners (Original estimates)

Estimates of full-time and part-time wage and salary earners also relate to the middle month of each quarter and are presented only in original terms.

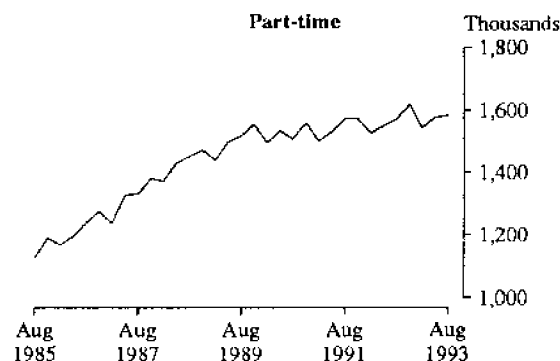
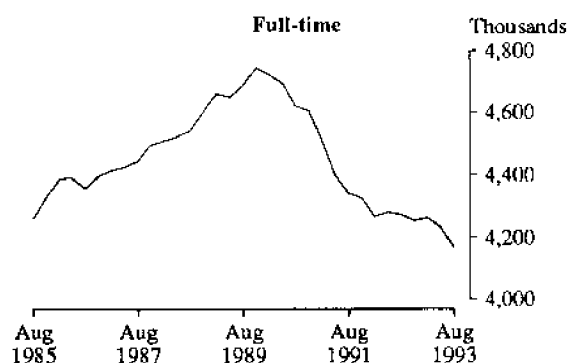
Diagram 4 shows the number of full-time and part-time employees over the previous eight years.

The number of full-time employees grew steadily over a number of years to a peak of 4,745,600 in November

1989 and has since fallen 12.2 per cent to 4,167,500 in August 1993.

The number of part-time employees also grew steadily over a number of years to 1,556,200 in November 1989. In contrast to full-time employees, the number of part-time employees continued to rise after November 1989, at a slower rate, to 1,584,400 in August 1993.

DIAGRAM 4. EMPLOYED WAGE AND SALARY EARNERS, PERSONS, AUSTRALIA



Source: See Table 11.

Employer unit size (Original estimates)

Estimates presented in Table 23 show the concentration of employees in the private sector employer units in three size ranges.

Less than 20 employees:

As illustrated in Diagram 5, over the seven year period from August 1986 to August 1993 the number of employees in the private sector employed by organisations with less than 20 employees showed a strong rise from 1,251,300 to a temporary peak in of 1,480,300 (18.3%) in August 1989. After a fall to a low of 1,378,600 in February 1991 the number of employees has since grown to the current level of 1,456,700. This represents a decrease of 1.6 per cent from the high of August 1989 and an increase of 5.7 per cent from the low in February 1991.

This is in contrast to the change in employment levels for those organisations in the 20 to 99 employees range and those in the 100 plus range.

20 to 99 employees:

As illustrated in Diagram 5 the employment levels in the 20-99 range fell from a high of 1,042,300 in November 1989 by 6.3 per cent to 975,900 in February 1991 and continued to decline to 940,900 in August 1993.

100 plus employees:

For the 100 plus employee category, Diagram 5 shows an even greater downward trend since the high of 2,056,400 in November 1989. The level of employment fell by 15.7 per cent to 1,733,300 in February 1992 and has remained relatively constant since then.

Earnings (Original estimates)

Total earnings for employed wage and salary earners in the September quarter 1993 in original terms was estimated as \$40,948.5m. This was a decrease of \$202.8m (0.5%) since the June 1993 quarter and an increase of \$497.8m (1.2%) since the same period in the previous year.

Survey of Pay Periods (Original estimates)

Table 24 contains pay period distribution of gross wages and salaries for each State and Territory for September Quarter 1992. Refer to paragraphs 29 to 31 of the Explanatory Notes.

**DIAGRAM 5. EMPLOYED WAGE AND SALARY EARNERS, AUSTRALIA
PRIVATE SECTOR, EMPLOYER SIZE**

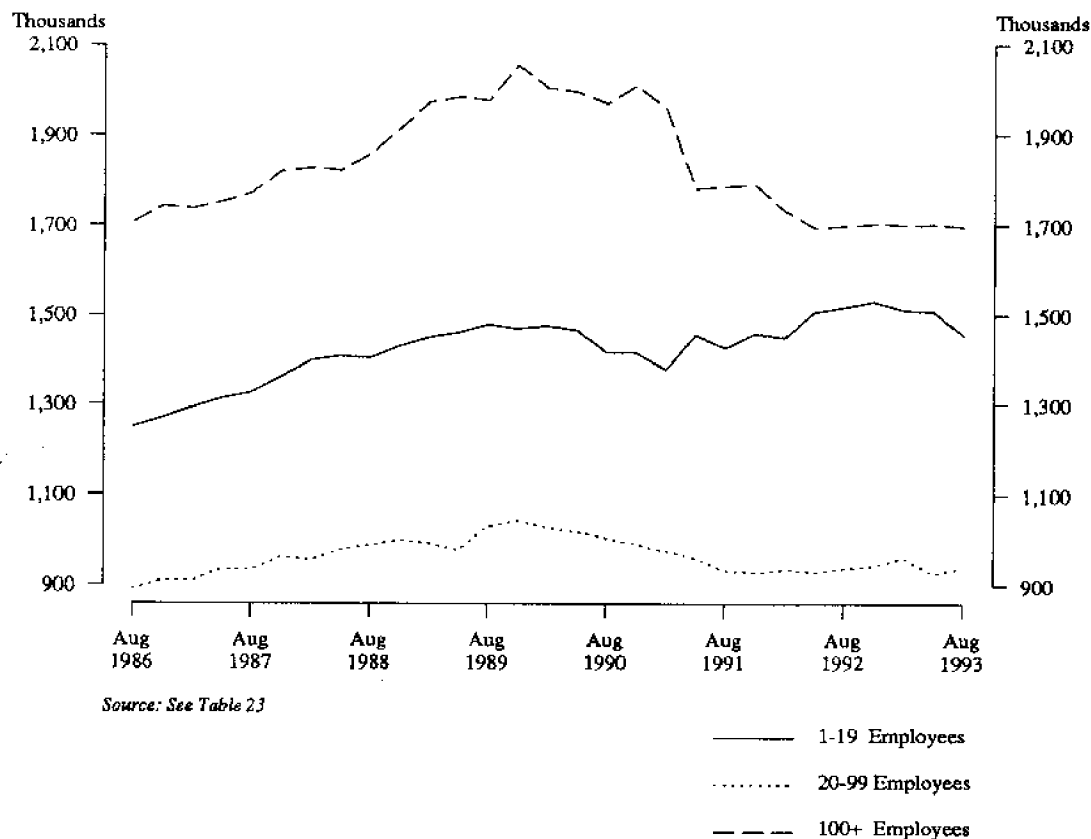


TABLE 1. EMPLOYED WAGE AND SALARY EARNERS, STATES AND TERRITORIES, PERSONS — TREND
(*000)

Month	NSW	Vic.	Qld	SA	WA	Tas.	NT	ACT	Aust.
PRIVATE									
1989-September	1,598.5	1,271.2	698.5	367.0	370.5	102.1	37.9	55.3	4,501.1
1990-September	1,583.3	1,243.4	655.1	367.9	356.6	98.7	39.5	55.2	4,399.7
1991-September	1,465.8	1,140.5	631.5	358.2	357.6	98.0	39.9	55.8	4,147.3
1992—									
August	1,467.2	1,122.2	652.6	327.8	380.7	95.9	34.5	62.7	4,143.7
September	1,466.8	1,120.4	655.1	327.9	383.0	95.8	35.0	62.1	4,146.1
October	1,464.9	1,119.5	657.4	327.9	385.2	96.0	35.5	61.5	4,147.9
November	1,461.6	1,119.4	659.5	327.8	387.2	96.5	35.9	61.0	4,148.8
December	1,457.2	1,119.7	661.1	327.5	389.1	97.2	36.2	60.6	4,148.7
1993—									
January	1,452.3	1,119.7	662.2	327.2	391.1	98.2	36.4	60.3	4,147.5
February	1,447.4	1,118.9	662.8	327.2	393.2	99.4	36.4	60.2	4,145.3
March(a)	1,442.8	1,117.1	662.8	327.3	395.5	100.6	36.2	60.1	4,142.5
April	1,438.7	1,114.1	662.5	327.5	397.9	101.8	36.0	60.1	4,138.6
May	1,435.1	1,109.9	661.9	327.9	400.3	102.9	35.8	60.0	4,133.8
June	1,431.9	1,105.0	661.2	328.4	402.5	103.8	35.4	59.9	4,128.1
July	1,428.9	1,099.3	660.3	328.9	404.6	104.7	35.1	59.8	4,121.7
August	1,426.4	1,093.4	659.3	329.6	406.7	105.5	34.7	59.7	4,115.5
September	1,424.8	1,088.1	657.8	330.3	409.5	106.4	34.3	59.9	4,111.1
PUBLIC									
1989-September	556.6	451.7	255.8	149.2	159.2	53.1	22.1	69.6	1,717.1
1990-September	557.3	451.8	264.7	152.8	161.5	50.5	22.3	71.6	1,732.2
1991-September	556.0	438.5	269.5	148.7	160.1	49.3	21.6	74.7	1,718.2
1992—									
August	531.6	429.7	271.3	144.4	159.7	47.9	20.2	71.2	1,675.7
September	530.9	428.9	272.1	143.9	159.9	47.6	20.1	71.4	1,674.6
October	530.9	427.5	273.0	143.6	160.3	47.4	20.1	71.7	1,674.2
November	531.6	425.4	274.0	143.4	160.8	47.2	20.0	72.1	1,674.1
December	532.5	422.6	275.0	143.3	161.3	47.1	20.0	72.4	1,673.9
1993—									
January	533.5	419.2	275.8	143.3	161.7	47.0	20.0	72.8	1,673.3
February	534.3	415.7	276.5	143.3	162.0	47.1	20.0	73.1	1,672.0
March(a)	534.5	412.0	276.9	143.2	162.1	47.1	20.1	73.5	1,669.7
April	534.2	408.5	277.1	143.1	162.2	47.2	20.1	73.8	1,666.6
May	533.4	405.2	277.3	143.0	162.1	47.3	20.2	74.1	1,662.9
June	532.3	402.1	277.3	142.8	162.0	47.4	20.2	74.3	1,658.7
July	530.9	399.0	277.3	142.5	161.9	47.5	20.2	74.6	1,654.3
August	529.8	395.9	277.2	142.3	161.7	47.6	20.3	74.8	1,649.8
September	528.9	392.8	277.0	142.0	161.5	47.6	20.3	75.1	1,645.4
PRIVATE AND PUBLIC									
1989-September	2,155.1	1,722.9	954.3	516.2	529.7	155.2	60.0	124.9	6,218.2
1990-September	2,140.6	1,695.2	919.9	520.6	518.0	149.2	61.9	126.8	6,132.0
1991-September	2,021.9	1,579.0	901.0	506.9	517.7	147.3	61.5	130.5	5,865.5
1992—									
August	1,998.8	1,551.9	923.9	472.2	540.4	143.8	54.8	133.9	5,819.4
September	1,997.7	1,549.3	927.2	471.8	543.0	143.4	55.1	133.5	5,820.8
October	1,995.8	1,547.0	930.5	471.5	545.5	143.4	55.5	133.2	5,822.1
November	1,993.2	1,544.8	933.5	471.2	547.9	143.6	55.9	133.1	5,822.9
December	1,989.7	1,542.3	936.1	470.8	550.3	144.3	56.2	133.0	5,822.6
1993—									
January	1,985.8	1,538.9	938.1	470.5	552.7	145.2	56.4	133.1	5,820.7
February	1,981.6	1,534.6	939.2	470.4	555.1	146.4	56.4	133.3	5,817.3
March(a)	1,977.3	1,529.1	939.7	470.5	557.6	147.8	56.3	133.6	5,812.2
April	1,972.9	1,522.6	939.6	470.6	560.1	149.0	56.1	133.8	5,805.2
May	1,968.5	1,515.1	939.2	470.8	562.4	150.2	55.9	134.1	5,796.7
June	1,964.1	1,507.0	938.5	471.1	564.6	151.3	55.6	134.2	5,786.8
July	1,959.8	1,498.3	937.7	471.5	566.5	152.2	55.3	134.4	5,776.0
August	1,956.2	1,489.3	936.6	471.9	568.4	153.1	55.0	134.5	5,765.3
September	1,953.8	1,481.0	934.8	472.3	571.0	154.0	54.6	135.0	5,756.5

(a) Includes Australian Electoral Commission temporary employees.

TABLE 2. EMPLOYED WAGE AND SALARY EARNERS, STATES AND TERRITORIES, PERSONS — SEASONALLY ADJUSTED ('000)

Month	NSW	Vic.	Qld	SA	WA	Tas.	NT	ACT	Aust.
PRIVATE									
1989-September	1,602.3	1,276.8	694.9	365.3	365.6	103.2	37.0	56.6	4,501.7
1990-September	1,584.9	1,231.8	650.2	364.9	356.6	97.1	39.5	55.8	4,380.9
1991-September	1,473.6	1,140.6	632.7	363.6	356.9	99.1	41.1	54.3	4,162.0
1992—									
August	1,474.0	1,128.5	651.8	329.1	388.3	95.4	35.1	63.2	4,165.4
September	1,474.5	1,128.2	651.4	327.0	391.5	96.0	35.3	63.9	4,167.8
October	1,448.0	1,106.5	658.8	327.8	378.4	95.5	36.3	58.7	4,110.0
November	1,458.4	1,106.9	661.5	329.2	383.2	96.0	35.8	59.2	4,130.2
December	1,459.6	1,105.5	660.9	330.2	380.9	95.3	35.9	59.4	4,127.7
1993—									
January	1,455.0	1,118.7	665.7	329.7	394.3	96.1	36.3	60.9	4,156.7
February	1,463.7	1,129.8	660.1	326.5	392.9	98.5	36.8	60.1	4,168.4
March(a)	1,461.8	1,130.7	666.3	326.7	388.7	98.7	36.6	60.8	4,170.3
April	1,409.9	1,123.4	663.1	323.2	401.1	105.5	36.7	60.6	4,123.6
May	1,418.2	1,122.5	664.2	324.3	408.6	106.3	36.5	60.9	4,141.4
June	1,423.8	1,125.7	665.7	325.8	409.1	107.2	36.4	60.6	4,154.3
July	1,434.7	1,072.5	654.5	332.1	400.7	102.7	33.8	58.4	4,089.4
August	1,436.6	1,075.7	656.7	335.6	403.1	103.2	33.5	58.6	4,102.9
September	1,434.8	1,073.8	653.6	331.1	405.3	104.0	33.6	60.5	4,096.7
PUBLIC									
1989-September	555.3	452.2	251.9	149.3	159.6	53.0	22.1	70.2	1,712.8
1990-September	557.6	452.0	266.0	152.9	162.3	50.1	22.4	71.9	1,733.9
1991-September	553.8	437.3	271.4	147.5	158.6	49.4	21.5	75.1	1,713.3
1992—									
August	534.7	428.9	269.2	144.2	158.7	48.3	20.3	71.4	1,674.2
September	532.9	431.8	271.4	143.9	159.5	47.5	20.2	71.8	1,677.5
October	515.5	429.5	273.9	143.4	160.0	47.7	20.0	71.7	1,661.5
November	532.3	430.2	276.1	142.8	161.1	47.1	20.0	72.2	1,681.7
December	534.3	429.4	278.6	142.4	161.8	45.8	19.8	72.3	1,683.9
1993—									
January	528.5	414.8	268.7	142.4	160.3	45.9	19.7	72.3	1,652.5
February	529.0	408.1	273.6	141.1	159.6	46.6	19.8	72.3	1,649.3
March(a)	563.8	419.9	285.9	146.8	169.5	48.2	20.5	74.1	1,729.2
April	533.4	404.7	275.9	144.4	161.3	47.1	20.1	74.5	1,662.7
May	533.5	402.1	278.1	143.6	161.4	48.0	20.3	74.6	1,662.8
June	532.6	399.4	280.0	143.5	161.5	48.1	20.0	74.6	1,661.8
July	514.3	399.7	273.7	141.6	160.9	47.9	20.4	73.9	1,631.7
August	529.7	399.0	275.2	140.9	162.4	46.8	20.5	74.6	1,647.8
September	527.5	395.5	276.3	141.1	159.6	47.2	20.2	74.6	1,640.6
PRIVATE AND PUBLIC									
1989-September	2,157.5	1,729.0	946.7	514.7	525.2	156.2	59.1	126.8	6,214.5
1990-September	2,142.5	1,683.7	916.2	517.8	518.9	147.2	61.9	127.6	6,114.8
1991-September	2,027.4	1,578.0	904.1	511.1	515.5	148.5	62.6	129.4	5,875.3
1992—									
August	2,008.7	1,557.3	920.9	473.3	547.0	143.6	55.4	134.6	5,839.6
September	2,007.4	1,560.0	922.8	470.8	551.0	143.5	55.5	135.7	5,845.3
October	1,963.6	1,536.0	932.8	471.3	538.3	143.2	56.3	130.4	5,771.5
November	1,990.8	1,537.1	937.6	471.9	544.3	143.2	55.8	131.4	5,811.9
December	1,993.9	1,534.9	939.5	472.7	542.8	141.0	55.7	131.7	5,811.5
1993—									
January	1,983.5	1,533.5	934.5	472.1	554.6	141.9	56.1	133.2	5,809.3
February	1,992.7	1,537.9	933.7	467.5	552.5	145.1	56.6	132.4	5,817.8
March(a)	2,025.5	1,550.6	952.2	473.4	558.2	146.9	57.1	134.9	5,899.5
April	1,943.3	1,528.1	938.9	467.6	562.4	152.6	56.9	135.1	5,786.3
May	1,951.7	1,524.6	942.3	467.8	569.9	154.3	56.7	135.5	5,804.2
June	1,956.4	1,525.1	945.6	469.3	570.6	155.4	56.4	135.2	5,816.1
July	1,949.0	1,472.2	928.2	473.7	561.6	150.6	54.1	132.3	5,721.1
August	1,966.2	1,474.7	931.8	476.5	565.5	150.0	54.0	133.2	5,750.7
September	1,962.3	1,469.3	929.8	472.2	565.0	151.3	53.7	135.1	5,737.2

(a) Includes Australian Electoral Commission temporary employees.

TABLE 3. EMPLOYED WAGE AND SALARY EARNERS, STATES AND TERRITORIES, PERSONS
 ('000)

Month	NSW	Vic.	Qld	SA	WA	Tas.	NT	ACT	Aust.
PRIVATE									
1989-September	1,593.8	1,276.3	694.0	363.1	361.7	102.3	38.2	56.4	4,485.8
1990-September	1,578.9	1,232.2	649.2	362.5	352.4	96.4	40.8	55.6	4,367.9
1991-September	1,469.5	1,141.5	631.5	360.8	352.5	98.5	42.4	54.2	4,151.0
1992—									
August	1,468.6	1,127.7	652.7	327.4	385.3	94.9	36.2	63.6	4,156.4
September	1,471.0	1,129.3	650.0	324.4	386.6	95.4	36.4	63.8	4,156.9
October	1,454.4	1,111.9	668.9	325.4	380.6	95.2	37.9	59.7	4,134.1
November	1,473.8	1,119.3	674.2	329.0	386.4	96.2	37.1	60.9	4,177.0
December	1,477.9	1,124.6	666.3	328.4	387.2	96.6	35.7	61.0	4,177.7
1993—									
January	1,435.9	1,107.3	655.7	328.4	389.2	96.1	34.0	58.3	4,104.8
February	1,465.6	1,133.0	659.0	329.4	393.3	99.4	35.3	59.2	4,174.1
March(a)	1,465.2	1,139.1	666.2	329.5	391.0	99.1	35.2	60.1	4,185.5
April	1,410.2	1,111.6	658.4	325.6	403.0	105.9	36.0	60.8	4,111.7
May	1,419.5	1,115.7	661.9	327.4	408.7	106.1	36.4	61.0	4,136.8
June	1,417.5	1,114.1	660.5	325.8	408.6	105.9	36.6	59.7	4,128.7
July	1,421.5	1,064.9	649.9	330.7	397.5	102.4	34.3	58.5	4,059.6
August	1,431.5	1,074.8	657.6	333.9	399.9	102.7	34.5	59.0	4,093.9
September	1,431.7	1,074.9	652.1	328.4	400.2	103.4	34.6	60.4	4,085.8
PUBLIC									
1989-September	561.5	456.3	252.2	150.6	161.5	53.2	22.2	70.0	1,727.5
1990-September	563.4	456.4	266.1	154.2	164.2	50.1	22.5	71.7	1,748.6
1991-September	559.3	441.6	271.3	148.8	160.4	49.3	21.6	75.0	1,727.4
1992—									
August	537.5	432.6	270.2	144.7	159.0	49.5	20.2	71.1	1,684.8
September	538.2	436.2	271.4	145.2	161.2	47.3	20.3	71.7	1,691.5
October	515.6	430.1	275.4	144.4	160.4	48.3	20.1	71.5	1,665.8
November	536.8	432.6	278.1	143.7	163.5	48.1	20.2	72.1	1,695.0
December	532.5	429.3	277.4	143.3	160.7	46.8	19.9	72.1	1,681.9
1993—									
January	507.8	404.8	258.8	135.9	153.6	43.4	19.4	71.5	1,595.1
February	522.1	403.3	271.6	139.9	157.8	44.2	19.4	72.1	1,630.5
March(a)	566.4	418.9	288.3	147.1	170.1	48.0	20.4	74.3	1,733.5
April	537.2	404.9	277.8	144.9	162.2	47.1	20.1	74.9	1,669.2
May	540.3	404.2	280.2	144.3	161.8	48.8	20.4	75.2	1,675.1
June	540.6	402.3	282.1	144.9	165.0	48.8	20.3	75.6	1,679.6
July	510.3	400.0	274.4	141.8	160.3	48.1	20.4	73.7	1,629.0
August	532.6	402.4	276.2	141.4	162.7	48.0	20.4	74.4	1,658.0
September	532.9	399.6	276.2	142.4	161.4	47.0	20.3	74.5	1,654.2
PRIVATE AND PUBLIC									
1989-September	2,155.3	1,732.6	946.2	513.7	523.1	155.5	60.4	126.4	6,213.2
1990-September	2,142.2	1,688.6	915.2	516.7	516.6	146.5	63.3	127.3	6,116.5
1991-September	2,028.9	1,583.1	902.9	509.6	512.9	147.7	64.0	129.2	5,878.4
1992—									
August	2,006.1	1,560.3	922.9	472.1	544.2	144.3	56.5	134.8	5,841.1
September	2,009.2	1,565.5	921.4	469.5	547.8	142.8	56.7	135.5	5,848.4
October	1,970.1	1,542.0	944.3	469.8	541.0	143.5	58.0	131.2	5,799.9
November	2,010.6	1,551.9	952.3	472.7	549.9	144.2	57.3	133.0	5,872.0
December	2,010.4	1,553.9	943.7	471.7	547.9	143.4	55.6	133.0	5,859.6
1993—									
January	1,943.7	1,512.1	914.4	464.2	542.8	139.6	53.4	129.7	5,700.0
February	1,987.6	1,536.3	930.6	469.3	551.1	143.6	54.7	131.4	5,804.5
March(a)	2,031.6	1,558.1	954.5	476.6	561.0	147.1	55.7	134.4	5,919.0
April	1,947.5	1,516.5	936.2	470.5	565.3	153.0	56.1	135.7	5,780.8
May	1,959.8	1,519.9	942.1	471.7	570.5	154.9	56.8	136.2	5,811.9
June	1,958.2	1,516.4	942.5	470.7	573.7	154.7	56.9	135.3	5,808.2
July	1,931.9	1,464.9	924.3	472.5	557.8	150.4	54.7	132.2	5,688.6
August	1,964.1	1,477.2	933.8	475.3	562.6	150.6	54.9	133.4	5,751.9
September	1,964.6	1,474.5	928.3	470.8	561.6	150.5	54.9	134.9	5,740.0

(a) Includes Australian Electoral Commission temporary employees.

TABLE 4. GROSS EARNINGS, STATES AND TERRITORIES, SECTORS
(\$m)

Year/Quarter	NSW	Vic.	Qld	SA	WA	Tas.	NT	ACT	Aust.
PRIVATE									
1989-90	39,244.1	30,297.9	14,929.9	7,608.8	8,588.2	2,181.5	870.0	1,156.9	104,877.2
1990-91	39,982.4	30,123.4	14,589.8	8,156.1	8,698.3	2,197.8	964.9	1,219.6	105,932.3
1991-92	39,513.3	28,614.4	15,025.2	7,873.7	9,160.4	2,289.1	879.5	1,377.8	104,733.6
1992-93	40,048.1	29,233.8	16,399.8	7,911.9	10,311.9	2,329.1	832.4	1,360.4	108,427.3
1991—									
March	9,661.4	7,150.6	3,504.9	2,054.0	2,115.4	551.1	223.3	290.4	25,551.2
June	9,724.9	6,997.5	3,604.3	2,074.1	2,235.0	550.3	251.4	305.0	25,742.4
September	9,832.2	6,985.1	3,667.3	2,036.3	2,193.5	568.8	262.6	306.3	25,852.2
December	10,109.1	7,465.9	3,877.9	2,084.9	2,330.2	592.0	234.4	347.5	27,041.9
1992—									
March	9,549.5	6,927.8	3,616.5	1,812.4	2,221.5	561.7	188.4	347.6	25,225.4
June	10,022.5	7,235.6	3,863.6	1,940.2	2,415.2	566.6	194.1	376.4	26,614.1
September	9,979.2	7,314.0	4,012.5	1,932.4	2,514.3	577.0	210.3	367.5	26,907.1
December	10,331.7	7,562.3	4,264.7	2,066.0	2,577.2	590.0	212.3	337.8	27,941.9
1993—									
March	9,826.5	7,115.1	3,914.8	1,912.9	2,494.1	564.6	191.0	312.7	26,331.6
June	9,910.7	7,242.5	4,207.8	2,000.7	2,726.3	597.6	218.8	342.4	27,246.7
September	9,946.2	7,195.0	3,960.4	2,094.3	2,764.8	578.4	214.3	330.7	27,084.3
PUBLIC									
1989-90	15,718.0	12,677.6	6,767.5	4,113.3	4,363.4	1,387.5	666.4	2,191.3	47,885.0
1990-91	16,633.1	13,386.1	7,185.0	4,486.4	4,607.5	1,399.6	683.2	2,460.6	50,841.4
1991-92	17,313.9	13,971.1	7,822.1	4,599.1	4,942.1	1,474.5	668.4	2,611.3	53,402.5
1992-93	17,613.4	14,322.4	8,453.9	4,592.5	4,994.2	1,454.0	709.2	2,621.9	54,761.5
1991—									
March	4,214.3	3,244.6	1,734.7	1,103.7	1,172.7	339.6	166.7	649.4	12,625.8
June	4,070.2	3,383.6	1,816.6	1,118.4	1,091.8	332.3	160.8	589.2	12,563.0
September	4,322.3	3,349.7	1,886.7	1,140.4	1,240.5	384.1	173.6	703.8	13,201.2
December	4,372.6	3,752.6	2,048.8	1,179.5	1,277.0	374.9	168.5	654.4	13,828.3
1992—									
March	4,337.9	3,448.2	1,933.8	1,155.9	1,229.8	366.2	172.2	669.2	13,313.4
June	4,281.2	3,420.6	1,952.7	1,123.3	1,194.8	349.3	154.0	583.8	13,059.7
September	4,372.3	3,465.4	2,006.1	1,196.7	1,278.4	376.6	177.8	670.4	13,543.6
December	4,577.6	3,766.0	2,290.4	1,144.9	1,319.5	372.3	180.5	684.6	14,335.8
1993—									
March	4,127.9	3,466.2	1,999.9	1,107.9	1,169.9	332.6	158.4	614.8	12,977.6
June	4,535.6	3,624.9	2,157.5	1,143.1	1,226.4	372.4	192.6	652.1	13,904.6
September	4,471.5	3,407.1	2,119.0	1,236.4	1,323.0	360.1	186.0	761.0	13,864.1
PRIVATE AND PUBLIC									
1989-90	54,962.1	42,975.5	21,697.4	11,722.1	12,951.7	3,569.0	1,536.4	3,348.1	152,762.2
1990-91	56,615.5	43,509.4	21,774.8	12,642.5	13,305.9	3,597.4	1,648.1	3,680.2	156,773.7
1991-92	56,827.3	42,585.5	22,847.3	12,472.8	14,102.5	3,763.7	1,547.9	3,989.1	158,136.1
1992-93	57,661.4	43,556.2	24,853.7	12,504.5	15,306.1	3,783.0	1,541.6	3,982.2	163,188.8
1991—									
March	13,875.7	10,395.3	5,239.6	3,157.8	3,288.1	890.7	390.0	939.9	38,177.0
June	13,795.1	10,381.1	5,420.9	3,192.5	3,326.8	882.6	412.3	894.2	38,305.4
September	14,154.5	10,334.9	5,554.0	3,176.7	3,434.0	953.0	436.2	1,010.1	39,053.4
December	14,481.6	11,218.5	5,926.7	3,264.4	3,607.2	966.9	402.9	1,001.9	40,870.1
1992—									
March	13,887.5	10,376.0	5,550.3	2,968.3	3,451.4	927.9	360.6	1,016.9	38,538.8
June	14,303.7	10,656.2	5,816.3	3,063.5	3,609.9	915.9	348.1	960.3	39,673.8
September	14,351.5	10,779.3	6,018.6	3,129.1	3,792.6	953.6	388.1	1,037.8	40,450.7
December	14,909.2	11,328.2	6,555.1	3,210.9	3,896.7	962.3	392.8	1,022.4	42,277.7
1993—									
March	13,954.4	10,581.3	5,914.7	3,020.7	3,664.0	897.2	349.3	927.5	39,309.1
June	14,446.3	10,867.4	6,365.3	3,143.7	3,952.7	970.0	411.3	994.5	41,151.3
September	14,417.7	10,602.1	6,079.4	3,330.7	4,087.9	938.5	400.3	1,091.8	40,948.5

TABLE 5. EMPLOYED WAGE AND SALARY EARNERS, STATES AND TERRITORIES, PERSONS — TREND

State, Territory/Sector	Number of employees ('000)				
	September 1992	June 1993	July 1993	August 1993	September 1993
New South Wales	1,997.7	1,964.1	1,959.8	1,956.2	1,953.8
Private	1,466.8	1,431.9	1,428.9	1,426.4	1,424.8
Public	530.9	532.3	530.9	529.8	528.9
Commonwealth	128.2	124.3	123.0	121.6	120.3
State	346.5	354.1	354.2	354.4	354.7
Local	56.1	53.8	53.8	53.8	53.9
Victoria	1,549.3	1,507.0	1,498.3	1,489.3	1,481.0
Private	1,120.4	1,105.0	1,099.3	1,093.4	1,088.1
Public	428.9	402.1	399.0	395.9	392.8
Commonwealth	97.5	94.4	93.4	92.4	91.5
State	286.4	261.5	259.4	257.3	255.2
Local	45.0	46.2	46.2	46.2	46.2
Queensland	927.2	938.5	937.7	936.6	934.8
Private	655.1	661.2	660.3	659.3	657.8
Public	272.1	277.3	277.3	277.2	277.0
Commonwealth	47.0	47.5	47.3	47.1	47.0
State	192.8	195.2	195.3	195.3	195.3
Local	32.3	34.7	34.7	34.7	34.7
South Australia	471.8	471.1	471.5	471.9	472.3
Private	327.9	328.4	328.9	329.6	330.3
Public	143.9	142.8	142.5	142.3	142.0
Commonwealth	27.8	27.0	26.8	26.5	26.2
State	106.9	106.5	106.5	106.5	106.6
Local	9.2	9.3	9.3	9.2	9.2
Western Australia	543.0	564.6	566.5	568.4	571.0
Private	383.0	402.5	404.6	406.7	409.5
Public	159.9	162.0	161.9	161.7	161.5
Commonwealth	25.0	24.4	24.1	23.9	23.6
State	123.0	125.3	125.3	125.4	125.3
Local	11.9	12.4	12.4	12.5	12.5
Tasmania	143.4	151.3	152.2	153.1	154.0
Private	95.8	103.8	104.7	105.5	106.4
Public	47.6	47.4	47.5	47.6	47.6
State	34.8	34.7	34.8	35.0	35.1
Northern Territory	55.1	55.6	55.3	55.0	54.6
Private	35.0	35.4	35.1	34.7	34.3
Public	20.1	20.2	20.2	20.3	20.3
Australian Capital Territory	133.5	134.2	134.4	134.5	135.0
Private	62.1	59.9	59.8	59.7	59.9
Public	71.4	74.3	74.6	74.8	75.1
Australia	5,820.8	5,786.8	5,776.0	5,765.3	5,756.5
Private	4,146.1	4,128.1	4,121.7	4,115.5	4,111.1
Public	1,674.6	1,658.7	1,654.3	1,649.8	1,645.4
Commonwealth	390.3	384.2	381.1	377.9	374.7
State	1,124.4	1,112.4	1,111.0	1,109.7	1,108.4
Local	159.9	162.1	162.2	162.2	162.3

TABLE 6. EMPLOYED WAGE AND SALARY EARNERS, STATES AND TERRITORIES, PERSONS — SEASONALLY ADJUSTED

State, Territory/Sector	Number of employees ('000)				
	September 1992	June 1993	July 1993	August 1993	September 1993
New South Wales	2,007.4	1,956.4	1,949.0	1,966.2	1,962.3
Private	1,474.5	1,423.8	1,434.7	1,436.6	1,434.8
Public	532.9	532.6	514.3	529.7	527.5
Commonwealth	128.1	122.6	119.4	119.3	118.8
State	347.1	355.8	340.9	356.6	355.4
Local	57.7	54.2	54.0	53.8	53.4
Victoria	1,560.0	1,525.1	1,472.2	1,474.7	1,469.3
Private	1,128.2	1,125.7	1,072.5	1,075.7	1,073.8
Public	431.8	399.4	399.7	399.0	395.5
Commonwealth	98.8	92.7	92.0	91.1	90.8
State	288.5	260.7	261.6	262.2	258.6
Local	44.5	46.1	46.2	45.7	46.1
Queensland	922.8	945.6	928.2	931.8	929.8
Private	651.4	665.7	654.5	656.7	653.6
Public	271.4	280.0	273.7	275.2	276.3
Commonwealth	46.8	46.2	46.8	46.4	46.4
State	192.6	198.5	192.3	194.6	196.0
Local	32.0	35.2	34.6	34.2	33.8
South Australia	470.8	469.3	473.7	476.5	472.2
Private	327.0	325.8	332.1	335.6	331.1
Public	143.9	143.5	141.6	140.9	141.1
Commonwealth	27.6	26.8	26.0	25.9	25.9
State	107.1	107.3	106.4	105.9	106.0
Local	9.2	9.4	9.1	9.1	9.2
Western Australia	551.0	570.6	561.6	565.5	565.0
Private	391.5	409.1	400.7	403.1	405.3
Public	159.5	161.5	160.9	162.4	159.6
Commonwealth	25.0	23.9	23.6	23.5	23.0
State	122.6	125.3	125.0	126.3	124.2
Local	11.9	12.3	12.3	12.5	12.5
Tasmania	143.5	155.4	150.6	150.0	151.3
Private	96.0	107.2	102.7	103.2	104.0
Public	47.5	48.1	47.9	46.8	47.2
State	34.7	35.4	35.6	34.3	35.0
Northern Territory	55.5	56.4	54.1	54.0	53.7
Private	35.3	36.4	33.8	33.5	33.6
Public	20.2	20.0	20.4	20.5	20.2
Australian Capital Territory	135.7	135.2	132.3	133.2	135.1
Private	63.9	60.6	58.4	58.6	60.5
Public	71.8	74.6	73.9	74.6	74.6
Australia	5,845.3	5,816.1	5,721.1	5,750.7	5,737.2
Private	4,167.8	4,154.3	4,089.4	4,102.9	4,096.7
Public	1,677.5	1,661.8	1,631.7	1,647.8	1,640.6
Commonwealth	390.2	380.1	373.1	371.2	369.5
State	1,126.9	1,118.5	1,097.1	1,115.5	1,110.9
Local	160.4	163.3	161.4	161.1	160.2

TABLE 7. EMPLOYED WAGE AND SALARY EARNERS, STATES AND TERRITORIES

State, Territory/Sector	Number of employees ('000)						Gross earnings	
	September 1992	June 1993	July 1993	August 1993		September 1993	September Quarter 1993	
	Persons	Persons	Persons	Males	Females	Persons	Persons	\$m
New South Wales	2,009.2	1,958.2	1,931.9	1,084.4	879.7	1,964.1	1,964.6	14,417.7
Private	1,471.0	1,417.5	1,421.5	798.7	632.8	1,431.5	1,431.7	9,946.2
Public	538.2	540.6	510.3	285.7	246.9	532.6	532.9	4,471.5
Commonwealth	127.2	123.2	118.8	72.1	46.3	118.3	118.0	1,140.5
State	353.1	363.3	337.7	174.1	186.5	360.6	361.4	2,909.9
Local	57.9	54.1	53.8	39.5	14.1	53.6	53.5	421.1
Victoria	1,565.5	1,516.4	1,464.9	793.7	683.5	1,477.2	1,474.5	10,602.1
Private	1,129.3	1,114.1	1,064.9	587.8	487.0	1,074.8	1,074.9	7,195.0
Public	436.2	402.3	400.0	205.9	196.5	402.4	399.6	3,407.1
Commonwealth	98.4	92.9	91.5	54.3	36.5	90.8	90.5	879.6
State	293.2	262.8	263.0	128.5	136.9	265.4	262.9	2,251.5
Local	44.6	46.7	45.5	23.1	23.1	46.2	46.2	276.0
Queensland	921.4	942.5	924.3	507.4	426.4	933.8	928.3	6,079.4
Private	650.0	660.5	649.9	354.9	302.7	657.6	652.1	3,960.4
Public	271.4	282.1	274.4	152.5	123.7	276.2	276.2	2,119.0
Commonwealth	46.6	46.8	46.7	26.5	19.8	46.3	46.1	420.1
State	193.0	199.8	193.3	99.0	97.0	195.9	196.4	1,473.3
Local	31.9	35.5	34.4	27.0	7.0	34.0	33.6	225.5
South Australia	469.5	470.7	472.5	260.0	215.3	475.3	470.8	3,330.7
Private	324.4	325.8	330.7	187.3	146.6	333.9	328.4	2,094.3
Public	145.2	144.9	141.8	72.7	68.7	141.4	142.4	1,236.4
Commonwealth	27.5	27.0	26.1	16.9	9.0	25.9	25.9	248.6
State	108.4	108.5	106.7	49.6	56.9	106.5	107.4	927.3
Local	9.2	9.4	9.1	6.3	2.8	9.0	9.1	60.5
Western Australia	547.8	573.7	557.8	309.8	252.8	562.6	561.6	4,087.9
Private	386.6	408.6	397.5	226.0	173.9	399.9	400.2	2,764.8
Public	161.2	165.0	160.3	83.8	78.9	162.7	161.4	1,323.0
Commonwealth	24.8	23.8	23.8	14.0	9.4	23.3	22.8	212.8
State	124.6	128.9	124.3	62.0	65.0	127.0	126.2	1,037.1
Local	11.8	12.2	12.1	7.8	4.5	12.4	12.4	73.1
Tasmania	142.8	154.7	150.4	79.6	71.1	150.6	150.5	938.5
Private	95.4	105.9	102.4	54.7	48.0	102.7	103.4	578.4
Public	47.3	48.8	48.1	24.9	23.1	48.0	47.0	360.1
Commonwealth	8.5	8.2	7.8	5.0	2.8	7.7	7.7	71.3
State	34.6	36.0	35.7	16.6	19.1	35.7	34.8	259.5
Local	4.1	4.5	4.5	3.3	1.2	4.5	4.4	29.4
Northern Territory	56.7	56.9	54.7	29.9	25.0	54.9	54.9	400.3
Private	36.4	36.6	34.3	20.0	14.5	34.5	34.6	214.3
Public	20.3	20.3	20.4	9.9	10.5	20.4	20.3	186.0
Commonwealth	3.9	3.8	3.8	2.1	1.7	3.8	3.7	36.5
State	15.2	15.4	15.4	7.0	8.4	15.4	15.4	142.3
Local	1.2	1.1	1.2	0.8	0.4	1.2	1.2	7.2
Australian Capital Territory	135.5	135.3	132.2	68.1	65.2	133.4	134.9	1,091.8
Private	63.8	59.7	58.5	28.3	30.7	59.0	60.4	330.7
Public	71.7	75.6	73.7	39.9	34.5	74.4	74.5	761.0
Commonwealth	52.6	55.4	53.8	30.8	23.3	54.1	54.1	582.1
State	19.1	20.1	20.0	9.1	11.2	20.3	20.3	179.0
Australia	5,848.4	5,808.2	5,688.6	3,133.0	2,618.9	5,751.9	5,740.0	40,948.5
Private	4,156.9	4,128.7	4,059.6	2,257.8	1,836.1	4,093.9	4,085.8	27,084.3
Public	1,691.5	1,679.6	1,629.0	875.2	782.7	1,658.0	1,654.2	13,864.1
Commonwealth	389.6	381.1	372.2	221.6	148.7	370.3	368.9	3,591.5
State	1,141.2	1,134.8	1,096.1	545.8	581.0	1,126.8	1,124.8	9,179.9
Local	160.7	163.6	160.7	107.8	53.1	160.9	160.5	1,092.7

TABLE 8. EMPLOYED WAGE AND SALARY EARNERS, STATES AND TERRITORIES, PUBLIC INSTITUTIONAL SECTOR

State, Territory/Sector	Public Trading Enterprises		Financial Enterprises		General Government		Total Public	
	August 1993	September Quarter 1993	August 1993	September Quarter 1993	August 1993	September Quarter 1993	August 1993	September Quarter 1993
	Persons ('000)	Gross Earnings (\$m)	Persons ('000)	Gross Earnings (\$m)	Persons ('000)	Gross Earnings (\$m)	Persons ('000)	Gross Earnings (\$m)
New South Wales								
Total Public	116.7	1,166.8	28.0	233.9	387.9	3,070.7	532.6	4,471.5
Commonwealth	55.0	571.5	19.1	151.5	44.3	417.5	118.3	1,140.5
State	54.1	532.2	8.9	82.5	297.6	2,295.2	360.6	2,909.9
Local	7.6	63.1	—	—	46.0	358.0	53.6	421.1
Victoria								
Total Public	81.9	886.9	21.7	162.9	298.8	2,357.4	402.4	3,407.1
Commonwealth	39.8	426.0	15.9	122.8	35.1	330.9	90.8	879.6
State	40.9	449.5	5.8	40.1	218.7	1,761.9	265.4	2,251.5
Local	1.1	11.5	—	—	45.0	264.6	46.2	276.0
Queensland								
Total Public	36.6	329.1	8.7	66.3	230.9	1,723.6	276.2	2,119.0
Commonwealth	18.5	179.0	6.4	48.0	21.4	193.1	46.3	420.1
State	12.7	110.1	2.3	18.3	180.9	1,344.9	195.9	1,473.3
Local	5.4	39.9	—	—	28.6	185.6	34.0	225.5
South Australia								
Total Public	22.8	231.6	7.1	57.3	111.5	947.5	141.4	1,236.4
Commonwealth	11.8	119.8	2.6	18.1	11.5	110.7	25.9	248.6
State	10.9	111.3	4.6	39.1	91.0	776.8	106.5	927.3
Local	0.1	0.4	—	—	9.0	60.0	9.0	60.5
Western Australia								
Total Public	28.4	258.8	7.1	51.0	127.2	1,013.2	162.7	1,323.0
Commonwealth	9.2	89.6	3.1	21.6	11.0	101.6	23.3	212.8
State	19.2	169.2	3.9	29.4	103.8	838.6	127.0	1,037.1
Local	—	—	—	—	12.4	73.1	12.4	73.1
Tasmania								
Total Public	6.6	61.4	0.8	5.4	40.6	293.3	48.0	360.1
Commonwealth	2.8	27.5	0.7	5.1	4.2	38.6	7.7	71.3
State	3.2	29.4	—	0.2	32.5	229.8	35.7	259.5
Local	0.6	4.5	—	—	3.9	24.9	4.5	29.4
Northern Territory								
Total Public	0.9	8.8	0.3	1.9	19.2	175.2	20.4	186.0
Commonwealth	0.7	7.4	0.2	1.6	2.8	27.5	3.8	36.5
State	0.2	1.4	—	0.3	15.2	140.6	15.4	142.3
Local	—	—	—	—	1.2	7.2	1.2	7.2
Australian Capital Territory								
Total Public	5.9	55.1	1.5	13.2	67.0	692.7	74.4	761.0
Commonwealth	3.1	29.8	1.3	11.5	49.7	540.8	54.1	582.1
State	2.8	25.4	0.2	1.7	17.3	151.9	20.3	179.0
Australia								
Total Public	299.8	2,998.6	75.1	591.9	1,283.0	10,273.7	1,658.0	13,864.1
Commonwealth	140.9	1,450.7	49.4	380.2	180.0	1,760.6	370.3	3,591.5
State	144.0	1,428.5	25.8	211.7	957.0	7,539.8	1,126.8	9,179.9
Local	14.9	119.4	—	—	146.0	973.3	160.9	1,092.7

TABLE 9. EMPLOYED WAGE AND SALARY EARNERS, AUSTRALIA,
PUBLIC INSTITUTIONAL SECTOR, AUGUST 1993
PERSONS ('000)

<i>Industry</i>	<i>Public Trading Enterprises</i>	<i>Financial Enterprises</i>	<i>General Government</i>	<i>Total Public</i>
Agriculture, forestry, fishing and hunting	0.4	—	4.3	4.7
Mining	4.0	—	—	4.0
Manufacturing	14.4	0.3	5.4	20.1
Electricity, gas and water	79.2	—	10.3	89.5
Construction	0.2	5.1	35.9	41.2
Wholesale trade	1.3	—	0.6	1.9
Retail trade	0.1	0.1	0.1	0.3
Transport and storage	77.9	—	25.4	103.3
Communication	105.0	—	0.1	105.2
Finance, property and business services	6.3	68.9	23.6	98.7
Public administration and defence(a)	1.2	0.8	328.6	330.7
Community services	1.6	—	834.1	835.8
Recreation, personal and other services	8.1	—	14.5	22.6
Total all industries	299.8	75.1	1,283.0	1,658.0

(a) Excludes members of permanent defence forces and employees of overseas embassies, consulates etc.

TABLE 10. EMPLOYED WAGE AND SALARY EARNERS, AUSTRALIA,
PUBLIC INSTITUTIONAL SECTOR, SEPTEMBER QUARTER 1993
GROSS EARNINGS (\$m)

<i>Industry</i>	<i>Public Trading Enterprises</i>	<i>Financial Enterprises</i>	<i>General Government</i>	<i>Total Public</i>
Agriculture, forestry, fishing and hunting	2.9	—	33.3	36.3
Mining	59.0	—	—	59.0
Manufacturing	123.7	3.0	48.9	175.6
Electricity, gas and water	782.0	—	95.5	877.5
Construction	2.6	34.1	307.8	344.3
Wholesale trade	10.8	—	3.7	14.5
Retail trade	0.5	0.6	0.5	1.6
Transport and storage	867.1	—	279.2	1,146.3
Communication	1,016.4	—	1.0	1,017.4
Finance, property and business services	62.8	545.4	166.9	775.1
Public administration and defence(a)	9.8	8.9	2,660.2	2,678.9
Community services	15.8	—	6,537.8	6,553.6
Recreation, personal and other services	45.2	—	138.9	184.1
Total all industries	2,998.6	591.9	10,273.7	13,864.1

(a) Excludes members of permanent defence forces and employees of overseas embassies, consulates etc.

TABLE 11. EMPLOYED WAGE AND SALARY EARNERS — FULL-TIME AND PART-TIME(a) — AUGUST 1993

	Number of employees (<i>'000</i>)					
	Full-time			Part-time		
	Males	Females	Persons	Males	Females	Persons
AUSTRALIA BY INDUSTRY						
Mining	57.5	5.5	63.0	1.8	0.9	2.7
Manufacturing	603.0	179.3	782.3	37.4	60.5	97.9
Electricity, gas and water	79.7	9.7	89.4	1.0	1.9	2.9
Construction	200.9	31.3	232.2	12.0	12.7	24.7
Wholesale trade	249.1	90.7	339.8	24.0	35.7	59.7
Retail trade	242.7	151.8	394.5	107.0	248.0	355.0
Transport and storage	190.8	43.4	234.2	24.5	13.0	37.6
Communication	73.8	24.1	97.9	1.6	6.7	8.3
Finance, property and business services	315.8	267.7	583.5	44.2	123.6	167.8
Public administration and defence(b)	185.2	97.2	282.5	11.5	36.7	48.2
Community services	370.5	494.6	865.1	87.5	432.9	520.4
Recreation, personal and other services(c)	112.7	86.0	198.7	94.9	164.1	258.9
Total all industries(d)	2,685.4	1,482.1	4,167.5	447.6	1,136.8	1,584.4
Private	1,881.1	956.5	2,837.6	376.7	879.7	1,256.4
Public	804.3	525.6	1,329.9	70.9	257.1	328.1
STATES AND TERRITORIES						
New South Wales	925.3	520.3	1,445.6	159.1	359.4	518.5
Victoria	679.8	384.1	1,064.0	113.9	299.3	413.2
Queensland	440.2	243.5	683.7	67.3	182.9	250.1
South Australia	222.8	108.9	331.6	37.3	106.4	143.6
Western Australia	267.1	133.7	400.8	42.7	119.1	161.8
Tasmania	66.2	34.5	100.7	13.4	36.6	50.0
Northern Territory	25.3	16.8	42.0	4.6	8.3	12.9
Australian Capital Territory	58.8	40.3	99.1	9.4	24.9	34.3

(a) See Explanatory Notes, paragraph 26. (b) Excludes members of permanent defence forces and employees of overseas embassies, consulates etc. (c) Excludes private households employing staff. (d) Includes employees of government agencies classified to Agriculture, forestry, fishing and hunting.

TABLE 12. EMPLOYED WAGE AND SALARY EARNERS, AUSTRALIA, PERSONS — TREND

Industry	Number of employees (^{'000})				
	September 1992	June 1993	July 1993	August 1993	September 1993
Mining	78.1	69.3	68.0	66.7	65.3
Manufacturing	904.6	892.0	891.3	890.7	890.1
Construction	253.9	257.4	257.1	256.7	256.1
Wholesale trade	388.0	406.4	407.2	407.9	408.5
Retail trade	801.7	776.5	771.3	766.2	762.0
Transport and storage	266.5	261.2	262.1	263.3	264.6
Communication	116.0	108.1	107.5	106.8	106.4
Finance, property and business services	761.3	753.7	752.6	751.5	750.3
Public administration and defence(a)	324.1	337.8	336.9	335.9	334.5
Community services	1,365.2	1,374.8	1,372.9	1,371.3	1,369.6
Recreation, personal and other services	458.8	448.4	449.1	449.9	451.7
Total all industries(b)(c)	5,820.8	5,786.8	5,776.0	5,765.3	5,756.5

(a) Excludes members of permanent defence forces and employees of overseas embassies, consulates, etc. (b) Includes employees of government agencies classified to Agriculture, forestry, fishing and hunting. (c) Derived indirectly by the addition of trend data for the private and public sectors, not by the summation of the component industries because not all industries are trend adjusted.

TABLE 13. EMPLOYED WAGE AND SALARY EARNERS, AUSTRALIA, PERSONS — SEASONALLY ADJUSTED

Industry	Number of employees (^{'000})				
	September 1992	June 1993	July 1993	August 1993	September 1993
Mining	78.0	69.7	66.5	65.9	66.3
Manufacturing	905.6	900.9	886.2	887.6	889.9
Construction	254.2	260.0	255.3	254.9	251.4
Wholesale trade	386.3	414.6	400.2	398.2	401.7
Retail trade	812.7	788.1	756.4	754.1	759.9
Transport and storage	267.1	250.7	271.2	275.2	269.7
Communication	118.7	108.7	108.0	106.8	106.0
Finance, property and business services	762.0	760.9	749.8	751.9	744.4
Public administration and defence(a)	320.5	330.5	332.0	331.3	329.2
Community services	1,368.2	1,387.8	1,343.4	1,369.2	1,368.8
Recreation, personal and other services	471.3	438.3	460.1	461.6	458.0
Total all industries(b)(c)	5,845.3	5,816.1	5,721.1	5,750.7	5,737.2

(a) Excludes members of permanent defence forces and employees of overseas embassies, consulates, etc. (b) Includes employees of government agencies classified to Agriculture, forestry, fishing and hunting. (c) Derived indirectly by the addition of seasonally adjusted private and public sector estimates, not by the summation of the component industries because not all industries are seasonally adjusted.

TABLE 14. EMPLOYED WAGE AND SALARY EARNERS, AUSTRALIA -- SECTOR AND INDUSTRY

Industry	Number of employees ('000)						Gross earnings	
	September 1992	June 1993	July 1993	August 1993		September 1993	September Quarter 1993	
	Persons	Persons	Persons	Males	Females	Persons	Persons	\$m
PRIVATE								
Mining	72.5	65.4	62.0	55.4	6.2	61.6	61.7	857.2
Manufacturing	875.2	872.5	855.5	622.6	237.6	860.2	863.9	6,855.4
Electricity, gas and water	3.1	2.9	2.9	2.2	0.6	2.8	2.8	27.5
Construction	211.8	219.4	214.5	180.0	35.6	215.6	210.9	1,683.1
Wholesale trade	385.0	405.6	397.5	271.9	125.7	397.6	400.9	3,007.3
Retail trade	806.3	780.7	748.6	349.6	399.6	749.2	754.0	3,303.7
Transport and storage	151.3	145.3	165.4	125.8	42.6	168.4	164.6	1,258.7
Finance, property and business services	653.9	659.1	646.4	319.0	333.6	652.6	643.2	5,170.3
Community services	549.9	565.1	538.2	134.1	415.7	549.8	549.4	3,080.8
Recreation, personal and other services(a)	447.0	411.7	427.6	196.5	238.5	435.0	433.2	1,831.1
Total all industries(b)	4,156.9	4,128.7	4,059.6	2,257.8	1,836.1	4,093.9	4,085.8	27,084.3
COMMONWEALTH GOVERNMENT								
Manufacturing	16.6	14.8	13.3	11.6	1.5	13.2	13.1	118.6
Electricity, gas and water	0.7	0.7	0.7	0.5	0.1	0.7	0.7	6.3
Construction	4.2	4.5	4.3	3.7	0.4	4.2	4.1	42.7
Wholesale trade	0.9	0.6	0.6	0.4	0.2	0.6	0.6	5.9
Retail trade	—	—	—	—	—	—	—	—
Transport and storage	29.9	27.8	27.8	20.5	7.3	27.9	27.8	393.6
Communication	117.2	107.5	106.1	74.5	30.5	105.0	104.5	1,016.4
Finance, property and business services	57.6	54.9	54.2	21.9	31.9	53.8	53.5	432.9
Public administration and defence(c)	104.3	107.6	106.0	56.2	49.8	106.0	105.6	994.3
Community services	49.7	54.8	50.8	27.5	23.1	50.5	50.5	481.1
Recreation, personal and other services(a)	8.5	8.0	8.4	4.7	3.7	8.4	8.5	99.7
Total all industries(d)	389.6	381.1	372.2	221.6	148.7	370.3	368.9	3,591.5

See footnotes at end of table.

TABLE 14. EMPLOYED WAGE AND SALARY EARNERS, AUSTRALIA — SECTOR AND INDUSTRY—*continued*

Industry	Number of employees ('000)					Gross earnings		\$m
	September 1992	June 1993	July 1993	August 1993		September 1993	September Quarter 1993	
	Persons	Persons	Persons	Males	Females	Persons	Persons	
STATE GOVERNMENT								
Agriculture, forestry, fishing and hunting	5.1	4.6	4.6	3.7	0.9	4.6	4.6	35.7
Mining	4.8	4.2	4.1	3.9	0.1	4.0	3.9	59.0
Manufacturing	6.9	6.4	6.1	5.5	0.6	6.2	6.2	52.2
Electricity, gas and water	76.4	74.8	73.6	63.8	9.3	73.1	71.9	732.7
Construction	32.4	30.2	30.9	24.3	6.2	30.5	30.1	257.7
Wholesale trade	1.2	1.2	0.9	0.5	0.3	0.9	0.8	6.3
Retail trade	0.3	0.2	0.3	0.1	0.1	0.3	0.3	1.6
Transport and storage	81.1	75.0	74.2	67.4	6.3	73.7	72.3	739.3
Finance, property and business services	47.4	45.3	44.4	19.1	25.7	44.8	44.7	341.2
Public administration and defence(c)	86.5	90.9	90.6	55.1	35.6	90.6	89.7	804.4
Community services	785.8	788.6	752.0	296.1	488.0	784.1	786.2	6,066.2
Recreation, personal and other services	13.3	13.4	14.2	6.2	7.7	13.9	14.0	82.6
Total all industries(b)	1,141.2	1,134.8	1,096.1	545.8	581.0	1,126.8	1,124.8	9,179.9
LOCAL GOVERNMENT								
Electricity, gas and water	20.6	16.2	15.8	14.2	1.6	15.8	15.7	138.5
Public administration and defence(c)	129.8	135.8	133.5	85.5	48.6	134.0	133.9	880.2
Other industries	10.3	11.6	11.3	8.1	3.0	11.1	10.9	74.0
Total all industries	160.7	163.6	160.7	107.8	53.1	160.9	160.5	1,092.7
TOTAL PUBLIC								
Agriculture, forestry, fishing and hunting	5.2	4.6	4.7	3.8	1.0	4.7	4.7	36.3
Mining	4.8	4.2	4.1	3.9	0.1	4.0	3.9	59.0
Manufacturing	24.2	22.0	20.2	17.8	2.2	20.1	20.0	175.6
Electricity, gas and water	97.7	91.7	90.1	78.5	11.0	89.5	88.3	877.5
Construction	42.4	41.6	42.0	33.0	8.3	41.2	40.6	344.3
Wholesale trade	2.4	2.2	1.9	1.1	0.7	1.9	1.8	14.5
Retail trade	0.3	0.2	0.3	0.1	0.1	0.3	0.3	1.6
Transport and storage	112.8	104.5	103.8	89.5	13.8	103.3	101.9	1,146.3
Communication	117.3	107.7	106.3	74.6	30.5	105.2	104.7	1,017.4
Finance, property and business services	105.1	100.3	98.7	41.1	57.7	98.7	98.4	775.1
Public administration and defence(c)	320.6	334.2	330.1	196.7	134.0	330.7	329.3	2,678.9
Community services	836.6	844.7	804.0	323.9	511.8	835.8	837.8	6,553.6
Recreation, personal and other services	22.1	21.7	22.9	11.1	11.5	22.6	22.7	184.1
Total all industries	1,691.5	1,679.6	1,629.0	875.2	782.7	1,658.0	1,654.2	13,864.1

See footnotes at end of table.

TABLE 14. EMPLOYED WAGE AND SALARY EARNERS, AUSTRALIA — SECTOR AND INDUSTRY—*continued*

Industry	Number of employees (<i>'000</i>)						Gross earnings	
	September 1992	June 1993	July 1993	August 1993		September 1993	September Quarter 1993	
	Persons	Persons	Persons	Males	Females	Persons	Persons	\$m
PRIVATE AND PUBLIC								
Mining	77.2	69.6	66.1	59.3	6.3	65.6	65.7	916.2
Manufacturing	899.3	894.4	875.7	640.4	239.8	880.2	883.8	7,031.0
Electricity, gas and water	100.8	94.5	93.0	80.7	11.6	92.3	91.1	905.0
Construction	254.2	261.0	256.5	212.9	43.9	256.8	251.5	2,027.4
Wholesale trade	387.4	407.8	399.4	273.1	126.4	399.5	402.8	3,021.8
Retail trade	806.7	781.0	748.9	349.7	399.8	749.5	754.3	3,305.3
Transport and storage	264.0	249.8	269.2	215.3	56.4	271.7	266.5	2,404.9
Communication	118.4	108.8	107.3	75.4	30.8	106.2	105.8	1,026.8
Finance, property and business services	759.0	759.4	745.1	360.0	391.3	751.3	741.6	5,945.4
Public administration and defence(c)	320.6	334.2	330.1	196.7	134.0	330.7	329.3	2,678.9
Community services	1,386.6	1,409.7	1,342.2	458.1	927.5	1,385.6	1,387.2	9,634.4
Recreation, personal and other services(a)	469.1	433.4	450.5	207.6	250.0	457.6	455.9	2,015.2
Total all industries(d)	5,848.4	5,808.2	5,688.6	3,133.0	2,618.9	5,751.9	5,740.0	40,948.5

(a) Excludes private households employing staff. (b) Includes employees of enterprises classified to Communication. (c) Excludes members of permanent defence forces and employees of overseas embassies, consulates etc. (d) Includes employees of government agencies classified to Agriculture, forestry, fishing and hunting.

TABLE 15. EMPLOYED WAGE AND SALARY EARNERS, NEW SOUTH WALES — SECTOR AND INDUSTRY

Industry	Number of employees ('000)						Gross earnings	
	September 1992	June 1993	July 1993	August 1993		September 1993	September Quarter 1993	
	Persons	Persons	Persons	Males	Females	Persons	Persons	\$m
PRIVATE								
Manufacturing	289.5	296.8	287.1	207.2	79.6	286.8	286.9	2,420.1
Electricity, gas and water; Construction	79.9	75.7	83.3	69.7	13.0	82.7	80.6	649.3
Wholesale trade	155.5	156.8	159.7	105.7	53.3	159.0	160.0	1,318.7
Retail trade	272.9	269.2	269.3	128.3	140.8	269.1	271.1	1,230.5
Transport and storage	54.9	47.5	60.3	46.8	14.5	61.2	58.6	469.0
Finance, property and business services	260.9	252.2	242.4	117.1	128.7	245.8	245.6	2,042.4
Community services	180.5	168.7	159.2	39.3	125.0	164.3	164.8	949.2
Recreation, personal and other services(a)	158.1	134.2	144.3	69.7	76.9	146.7	148.5	635.9
Total all industries(b)(e)	1,471.0	1,417.5	1,421.5	798.7	632.8	1,431.5	1,431.7	9,946.2
PUBLIC								
Manufacturing	9.6	9.0	8.7	7.5	1.0	8.5	8.5	68.9
Electricity, gas and water; Construction	46.8	44.8	44.2	36.9	6.8	43.8	43.4	395.7
Wholesale trade	0.8	0.6	0.5	0.3	0.2	0.5	0.5	3.2
Retail trade	—	—	—	—	—	—	—	—
Transport and storage	40.6	38.9	38.4	32.8	5.7	38.5	38.2	463.2
Communication	41.5	37.0	35.9	25.2	10.4	35.7	35.6	323.5
Finance, property and business services	47.1	44.6	43.8	17.8	26.5	44.3	44.1	338.1
Public administration and defence(c)	86.9	89.2	88.7	53.9	34.7	88.6	88.4	734.7
Community services	251.8	264.0	237.7	103.0	157.2	260.2	261.6	2,011.8
Recreation, personal and other services	8.4	8.4	8.5	4.5	3.9	8.5	8.6	84.2
Total all industries(d)(e)	538.2	540.6	510.3	285.7	246.9	532.6	532.9	4,471.5
PRIVATE AND PUBLIC								
Mining	20.6	18.2	17.7	16.6	1.0	17.6	17.4	260.8
Manufacturing	299.1	305.8	295.8	214.7	80.6	295.3	295.3	2,489.0
Electricity, gas and water	36.6	34.9	34.7	29.5	4.9	34.3	34.1	309.5
Construction	90.1	85.6	92.8	77.2	14.9	92.1	90.0	735.6
Wholesale trade	156.3	157.4	160.2	106.0	53.5	159.5	160.5	1,321.9
Retail trade	272.9	269.2	269.3	128.3	140.8	269.1	271.1	1,230.5
Transport and storage	95.5	86.4	98.7	79.6	20.1	99.7	96.8	932.1
Communication	42.0	37.4	36.3	25.6	10.5	36.1	36.0	326.8
Finance, property and business services	308.1	296.8	286.1	134.9	155.2	290.1	289.7	2,380.4
Public administration and defence(c)	86.9	89.2	88.7	53.9	34.7	88.6	88.4	734.7
Community services	432.4	432.7	396.9	142.3	282.2	424.5	426.4	2,961.0
Recreation, personal and other services(a)	166.5	142.6	152.7	74.2	80.9	155.1	157.1	720.2
Total all Industries(d)	2,009.2	1,958.2	1,931.9	1,084.4	879.7	1,964.1	1,964.6	14,417.7

(a) Excludes private households employing staff. (b) Includes employees of private enterprises classified to communication. (c) Excludes members of permanent defence forces and employees of overseas embassies, consulates etc. (d) Includes employees of government agencies classified to Agriculture, forestry, fishing and hunting. (e) Includes employees classified to Mining.

TABLE 16. EMPLOYED WAGE AND SALARY EARNERS, VICTORIA — SECTOR AND INDUSTRY

Industry	Number of employees ('000)						Gross earnings	
	September 1992	June 1993	July 1993	August 1993		September 1993	September Quarter 1993	
	Persons	Persons	Persons	Males	Females	Persons	Persons	\$m
PRIVATE								
Mining	4.5	2.8	2.3	2.0	0.3	2.3	2.5	27.9
Manufacturing	296.2	286.1	269.8	188.0	82.2	270.2	271.8	2,181.6
Electricity, gas and water; Construction	50.5	50.6	42.1	34.7	8.1	42.9	42.6	315.7
Wholesale trade	94.1	101.6	97.1	64.6	33.3	97.9	100.3	725.7
Retail trade	209.2	185.0	168.0	79.1	88.8	167.9	168.4	750.8
Transport and storage	37.0	40.2	45.3	34.2	12.1	46.2	45.6	337.5
Finance, property and business services	173.8	184.0	184.5	98.7	88.3	186.9	182.9	1,551.6
Community services	158.1	158.7	147.6	35.5	114.8	150.4	149.5	872.2
Recreation, personal and other services(a)	105.8	104.9	108.0	51.0	59.0	110.0	111.2	430.5
Total all industries(b)	1,129.3	1,114.1	1,064.9	587.8	487.0	1,074.8	1,074.9	7,195.0
PUBLIC								
Agriculture, forestry, fishing and hunting	—	—	—	—	—	—	—	0.3
Mining	1.9	1.5	1.5	1.4	—	1.4	1.4	19.3
Manufacturing	6.0	5.1	3.8	3.4	0.3	3.7	3.7	40.4
Electricity, gas and water; Construction	37.0	31.7	32.3	27.1	4.7	31.8	31.0	346.6
Wholesale trade	0.3	0.3	0.3	0.2	0.1	0.3	0.3	3.1
Retail trade	—	—	0.1	—	0.1	0.1	0.1	0.3
Transport and storage	27.6	22.4	22.7	19.2	3.2	22.4	21.6	252.9
Communication	35.4	31.8	32.3	22.4	9.6	32.0	31.8	326.9
Finance, property and business services	20.4	19.1	18.8	7.0	11.6	18.6	18.5	148.2
Public administration and defence(c)	80.5	83.2	83.7	46.0	38.7	84.7	84.1	630.0
Community services	221.3	201.5	198.7	76.7	125.1	201.8	201.6	1,602.0
Recreation, personal and other services	5.7	5.5	5.8	2.6	3.0	5.6	5.5	37.2
Total all industries	436.2	402.3	400.0	205.9	196.5	402.4	399.6	3,407.1
PRIVATE AND PUBLIC								
Mining	6.4	4.3	3.8	3.4	0.4	3.8	3.8	47.2
Manufacturing	302.2	291.2	273.5	191.4	82.5	273.9	275.5	2,222.0
Electricity, gas and water	27.7	23.5	23.1	20.1	2.7	22.8	22.1	270.8
Construction	59.7	58.8	51.3	41.7	10.1	51.8	51.4	391.5
Wholesale trade	94.4	101.9	97.4	64.8	33.5	98.2	100.7	728.8
Retail trade	209.3	185.0	168.1	79.1	88.8	167.9	168.4	751.1
Transport and storage	64.6	62.7	68.0	53.4	15.3	68.7	67.2	590.5
Communication	35.5	32.0	32.5	22.5	9.7	32.2	31.9	328.4
Finance, property and business services	194.1	203.1	203.3	105.6	99.8	205.5	201.4	1,699.8
Public administration and defence(c)	80.5	83.2	83.7	46.0	38.7	84.7	84.1	630.0
Community services	379.4	360.3	346.3	112.2	240.0	352.2	351.1	2,474.2
Recreation, personal and other services(a)	111.5	110.4	113.8	53.5	62.0	115.5	116.7	467.7
Total all industries(d)	1,565.5	1,516.4	1,464.9	793.7	683.5	1,477.2	1,474.5	1,602.1

(a) Excludes private household

(b) 12 staff. (c)

employees of private enterprises classified as Communication, (d) 12 staff.

TABLE 17. EMPLOYED WAGE AND SALARY EARNERS, QUEENSLAND — SECTOR AND INDUSTRY

Industry	Number of employees ('000)						Gross earnings	
	September 1992	June 1993	July 1993	August 1993		September 1993	September Quarter 1993	
	Persons	Persons	Persons	Males	Females	Persons	Persons	
PRIVATE								
Mining	21.4	17.7	17.6	16.1	1.4	17.5	17.5	253.4
Manufacturing	119.4	118.5	127.3	94.8	34.8	129.6	131.3	922.5
Electricity, gas and water; Construction	36.3	41.1	36.4	31.4	6.0	37.4	35.3	266.4
Wholesale trade	54.3	58.1	54.3	38.7	15.4	54.1	54.2	334.1
Retail trade	141.9	143.7	133.8	58.8	75.8	134.6	135.4	542.3
Transport and storage	26.6	26.3	27.8	19.6	8.5	28.0	27.5	178.4
Finance, property and business services	92.2	92.7	88.0	42.4	47.4	89.8	90.6	626.8
Community services	79.8	84.6	85.3	20.3	66.9	87.2	86.2	483.2
Recreation, personal and other services(a)	78.0	77.6	79.3	32.8	46.6	79.4	74.0	353.3
Total all industries(b)	650.0	660.5	649.9	354.9	302.7	657.6	652.1	3,960.4
PUBLIC								
Agriculture, forestry, fishing and hunting	0.3	0.1	0.1	0.1	—	0.2	0.1	0.5
Manufacturing	3.7	3.8	3.8	3.5	0.2	3.7	3.7	33.2
Electricity, gas and water; Construction	20.5	21.9	21.7	18.2	3.3	21.5	21.2	171.3
Wholesale trade	0.6	0.6	0.6	0.3	0.2	0.6	0.5	4.1
Retail trade	0.2	0.2	0.2	0.1	0.1	0.2	0.2	1.1
Transport and storage	22.2	21.6	21.5	19.2	2.4	21.5	21.3	212.9
Communication	17.8	16.2	16.4	11.5	4.5	16.0	16.0	157.6
Finance, property and business services	12.7	12.0	11.9	5.3	6.6	11.9	11.9	91.6
Public administration and defence(c)	56.2	61.7	60.7	40.0	20.6	60.6	60.5	432.1
Community services	134.9	141.8	135.4	53.3	84.6	137.9	138.6	1,000.9
Recreation, personal and other services	2.1	2.0	2.1	0.8	1.3	2.1	2.1	13.6
Total all industries	271.4	282.1	274.4	152.5	123.7	276.2	276.2	2,119.0
PRIVATE AND PUBLIC								
Mining	21.4	17.7	17.6	16.1	1.4	17.5	17.5	253.4
Manufacturing	123.2	122.3	131.0	98.4	34.9	133.3	135.0	955.7
Electricity, gas and water	12.4	12.4	12.3	10.9	1.5	12.4	12.3	110.4
Construction	44.5	50.6	45.8	38.7	7.8	46.5	44.2	327.3
Wholesale trade	54.9	58.8	55.0	39.1	15.6	54.7	54.8	338.2
Retail trade	142.1	143.9	134.0	58.9	75.8	134.7	135.6	543.4
Transport and storage	48.9	48.0	49.3	38.7	10.8	49.6	48.8	391.3
Communication	17.8	16.2	16.5	11.5	4.5	16.1	16.0	157.7
Finance, property and business services	104.9	104.7	100.0	47.8	54.0	101.7	102.5	718.4
Public administration and defence(c)	56.2	61.7	60.7	40.0	20.6	60.6	60.5	432.1
Community services	214.7	226.4	220.7	73.6	151.5	225.1	224.8	1,484.1
Recreation, personal and other services(a)	80.1	79.6	81.4	33.6	47.9	81.5	76.2	366.8
Total all industries(d)	921.4	942.5	924.3	507.4	426.4	933.8	928.3	6,079.4

(a) Excludes private households employing staff.

TABLE 18. EMPLOYED WAGE AND SALARY EARNERS, SOUTH AUSTRALIA — SECTOR AND INDUSTRY

Industry	Number of employees ('000)						Gross earnings	
	September 1992	June 1993	July 1993	August 1993		September 1993	September Quarter 1993	
	Persons	Persons	Persons	Males	Females	Persons	Persons	\$m
PRIVATE								
Manufacturing	82.6	83.9	82.3	64.6	18.9	83.5	83.2	633.4
Electricity, gas and water; Construction	12.0	9.9	11.0	9.5	1.9	11.4	11.1	76.8
Wholesale trade	34.0	36.4	34.3	24.2	10.2	34.3	33.8	233.2
Retail trade	59.7	56.7	57.1	27.8	30.2	58.0	58.8	251.3
Transport and storage	*13.6	*14.5	13.7	11.4	2.5	13.8	13.6	114.2
Finance, property and business services	46.0	45.6	52.3	23.6	27.2	50.8	45.4	364.5
Community services	45.1	51.9	49.4	11.5	38.2	49.7	50.1	260.8
Recreation, personal and other services(a)	28.7	23.8	28.1	12.7	17.1	29.9	30.0	133.8
Total all industries(b)(e)	324.4	325.8	330.7	187.3	146.6	333.9	328.4	2,094.3
PUBLIC								
Manufacturing	3.0	2.7	2.8	2.4	0.3	2.7	2.7	22.7
Electricity, gas and water; Construction	12.9	12.4	11.4	9.9	1.4	11.3	11.2	110.9
Wholesale trade	*0.3	0.1	0.1	0.1	0.1	0.1	0.1	1.1
Retail trade	—	—	—	—	—	—	—	0.2
Transport and storage	7.8	6.9	6.8	6.0	0.7	6.7	6.8	74.5
Communication	8.6	9.1	8.1	6.0	2.1	8.1	8.1	82.2
Finance, property and business services	9.7	9.5	9.5	4.2	5.1	9.3	9.3	74.1
Public administration and defence(c)(f)	19.9	20.2	19.3	11.4	7.7	19.2	19.2	163.0
Community services	79.6	81.2	80.3	30.8	49.6	80.4	81.5	680.8
Recreation, personal and other services	2.5	1.8	2.7	1.2	1.5	2.7	2.7	19.0
Total all industries(d)(e)	145.2	144.9	141.8	72.7	68.7	141.4	142.4	1,236.4
PRIVATE AND PUBLIC								
Manufacturing	85.6	86.6	85.1	67.0	19.2	86.2	86.0	656.1
Electricity, gas and water	8.7	8.3	7.3	6.6	0.7	7.3	7.2	78.0
Construction	16.2	14.1	15.2	12.8	2.6	15.4	15.1	109.7
Wholesale trade	34.3	36.6	34.4	24.3	10.2	34.5	33.9	234.2
Retail trade	59.7	56.7	57.1	27.8	30.3	58.0	58.9	251.5
Transport and storage	*21.3	*21.4	20.6	17.4	3.1	20.5	20.3	188.7
Communication	8.6	9.2	8.2	6.1	2.1	8.2	8.2	82.5
Finance, property and business services	55.7	55.1	61.7	27.8	32.3	60.1	54.6	438.6
Public administration and defence(c)	19.9	20.2	19.3	11.4	7.7	19.2	19.2	163.0
Community services	124.7	133.1	129.7	42.3	87.8	130.1	131.6	941.6
Recreation, personal and other services(a)	31.3	25.6	30.8	13.9	18.6	32.6	32.7	152.8
Total all industries(d)(e)	469.5	470.7	472.5	260.0	215.3	475.3	470.8	3,330.7

(a) Excludes private households employing staff. (b) Includes employees of private enterprises classified to Communication. (c) Excludes members of permanent defence forces and employees of overseas embassies, consulates etc. (d) Includes employees of government agencies classified to Agriculture, forestry, fishing and hunting. (e) Includes employees classified to mining.

TABLE 19. EMPLOYED WAGE AND SALARY EARNERS, WESTERN AUSTRALIA — SECTOR AND INDUSTRY

Industry	Number of employees (<i>'000</i>)						Gross earnings	
	September 1992	June 1993	July 1993	August 1993		September 1993	September Quarter 1993	
	Persons	Persons	Persons	Males	Females	Persons	Persons	\$m
PRIVATE								
Mining	21.4	21.4	19.7	16.9	2.7	19.6	19.7	271.8
Manufacturing	61.3	60.7	62.6	48.3	15.0	63.3	64.0	502.6
Electricity, gas and water; Construction	24.0	31.5	31.8	26.5	5.2	31.7	32.0	311.3
Wholesale trade	33.7	40.2	38.5	29.1	9.7	38.8	38.5	303.6
Retail trade	76.9	77.6	75.9	35.0	40.1	75.0	75.2	336.5
Transport and storage	12.6	10.5	11.7	8.7	3.6	12.4	12.7	110.7
Finance, property and business services	53.2	56.3	52.1	24.7	27.7	52.4	51.5	417.5
Community services	56.5	68.0	62.1	17.4	45.8	63.2	63.3	331.4
Recreation, personal and other services(a)	46.9	42.2	42.8	19.3	24.1	43.4	43.3	178.1
Total all industries(b)	386.6	408.6	397.5	226.0	173.9	399.9	400.2	2,764.8
PUBLIC								
Agriculture, forestry, fishing and hunting	1.5	1.5	1.6	1.1	0.4	1.5	1.5	12.9
Manufacturing	0.8	0.3	0.3	0.3	0.1	0.4	0.4	2.6
Electricity, gas and water; Construction	13.6	13.1	13.1	11.6	1.5	13.1	12.9	114.2
Wholesale trade	0.5	0.5	0.3	0.2	0.1	0.3	0.3	2.8
Retail trade	—	—	—	—	—	—	—	—
Transport and storage	9.3	9.5	9.3	8.3	0.9	9.1	9.0	92.7
Communication	9.2	8.5	8.4	6.0	2.4	8.3	8.3	79.9
Finance, property and business services	9.7	9.5	9.1	3.8	5.2	9.0	9.0	69.0
Public administration and defence(c)	27.0	27.5	27.1	16.1	11.0	27.1	26.8	208.6
Community services	87.8	92.7	89.1	35.3	56.5	91.8	91.2	725.8
Recreation, personal and other services	1.9	1.9	1.9	0.9	1.0	1.9	1.9	13.3
Total all industries	161.2	165.0	160.3	83.8	78.9	162.7	161.4	1,323.0
PRIVATE AND PUBLIC								
Mining	21.4	21.4	19.8	17.0	2.7	19.7	19.8	273.0
Manufacturing	62.0	61.1	62.9	48.6	15.1	63.7	64.4	505.2
Electricity, gas and water	9.3	9.1	9.2	8.3	0.9	9.2	9.2	79.6
Construction	28.3	35.5	35.7	29.9	5.7	35.6	35.7	346.0
Wholesale trade	34.1	40.7	38.9	29.3	9.8	39.1	38.8	306.4
Retail trade	76.9	77.6	75.9	35.0	40.1	75.0	75.2	336.5
Transport and storage	21.9	20.0	21.1	17.0	4.5	21.5	21.6	203.4
Communication	9.4	8.6	8.6	6.1	2.4	8.5	8.4	81.2
Finance, property and business services	62.8	65.8	61.1	28.6	32.8	61.4	60.5	486.5
Public administration and defence(c)	27.0	27.5	27.1	16.1	11.0	27.1	26.8	208.6
Community services	144.2	160.7	151.2	52.7	102.2	155.0	154.5	1,057.2
Recreation, personal and other services(a)	48.8	44.1	44.7	20.2	25.1	45.3	45.2	191.4
Total all industries(d)	547.8	573.7	557.8	309.8	252.8	562.6	561.6	4,087.9

(a) Excludes private households

employees of private enterpr

classified to Communication. (c) Excludes mem

of permanent defence

TABLE 20. EMPLOYED WAGE AND SALARY EARNERS, TASMANIA — SECTOR AND INDUSTRY

Industry	Number of employees (^{'000})						Gross earnings	
	September 1992	June 1993	July 1993	August 1993		September 1993	September Quarter 1993	
	Persons	Persons	Persons	Males	Females	Persons	Persons	
PRIVATE								
Mining	1.5	2.1	1.8	1.7	0.1	1.8	1.8	19.4
Manufacturing	21.3	21.5	21.3	16.0	5.6	21.6	21.5	159.2
Electricity, gas and water; Construction	3.6	4.2	4.4	3.6	0.8	4.4	4.4	28.9
Wholesale trade	7.8	7.7	8.5	6.3	2.2	8.6	8.7	52.4
Retail trade	21.3	26.8	22.9	10.8	11.7	22.5	22.7	98.6
Transport and storage	4.2	4.0	4.1	3.2	1.0	4.2	4.3	28.1
Finance, property and business services	11.0	11.6	11.1	3.9	6.8	10.8	11.2	64.6
Community services	13.8	16.3	17.1	5.0	12.5	17.5	17.5	87.8
Recreation, personal and other services(a)	10.9	11.8	11.1	4.2	7.1	11.3	11.2	39.4
Total all industries(b)	95.4	105.9	102.4	54.7	48.0	102.7	103.4	578.4
PUBLIC								
Agriculture, forestry, fishing and hunting	0.7	0.7	0.7	0.6	0.1	0.7	0.7	4.6
Manufacturing	0.1	0.1	0.1	0.1	—	0.1	0.1	0.7
Electricity, gas and water; Construction	5.4	5.1	4.8	4.1	0.6	4.7	4.5	40.2
Wholesale trade	—	—	—	—	—	—	—	0.2
Retail trade	0.1	—	—	—	—	—	—	—
Transport and storage	2.0	1.9	1.8	1.5	0.3	1.9	1.8	14.5
Communication	2.4	2.3	2.3	1.7	0.5	2.2	2.2	21.7
Finance, property and business services	1.4	1.4	1.5	0.8	0.7	1.5	1.5	11.2
Public administration and defence(c)(e)	9.9	10.4	9.6	6.0	3.6	9.6	9.6	71.1
Community services	24.6	26.3	26.6	9.7	16.9	26.7	26.0	190.6
Recreation, personal and other services	0.7	0.6	0.7	0.4	0.3	0.7	0.7	5.2
Total all industries	47.3	48.8	48.1	24.9	23.1	48.0	47.0	360.1
PRIVATE AND PUBLIC								
Mining	1.5	2.1	1.8	1.7	0.1	1.8	1.8	19.4
Manufacturing	21.4	21.6	21.4	16.1	5.6	21.7	21.6	160.0
Electricity, gas and water	3.6	3.8	3.6	3.1	0.4	3.5	3.4	31.7
Construction	5.4	5.5	5.7	4.6	1.0	5.6	5.6	37.4
Wholesale trade	7.9	7.7	8.5	6.4	2.2	8.6	8.8	52.6
Retail trade	21.4	26.8	22.9	10.8	11.7	22.5	22.7	98.6
Transport and storage	6.2	5.9	5.9	4.7	1.3	6.1	6.1	42.6
Communication	2.4	2.3	2.3	1.7	0.5	2.2	2.2	21.7
Finance, property and business services	12.4	13.0	12.6	4.7	7.5	12.2	12.7	75.8
Public administration and defence(c)	9.9	10.4	9.6	6.0	3.6	9.6	9.6	71.1
Community services	38.3	42.6	43.7	14.7	29.4	44.2	43.4	278.4
Recreation, personal and other services(a)	11.6	12.5	11.8	4.5	7.4	11.9	11.9	44.6
Total all industries(d)	142.8	154.7	150.4	79.6	71.1	150.6	150.5	938.5

(a) Excludes private house

(staff

employees of private enterpr

employees of

TABLE 21. EMPLOYED WAGE AND SALARY EARNERS, NORTHERN TERRITORY — INDUSTRY

Industry	Number of employees ('000)						Gross earnings	
	September 1992	June 1993	July 1993	August 1993		September 1993	September Quarter 1993	
	Persons	Persons	Persons	Males	Females	Persons	Persons	\$m
Mining	2.5	2.2	2.4	2.1	0.2	2.3	2.4	29.6
Manufacturing	1.9	2.1	2.0	1.4	0.6	2.0	2.0	13.0
Electricity, gas and water	1.0	0.9	0.9	0.8	0.2	0.9	0.9	8.6
Construction	*4.5	*5.5	4.7	3.8	0.7	4.5	4.4	34.7
Wholesale trade	2.1	1.5	1.7	1.2	0.6	1.7	1.7	12.0
Retail trade	8.9	7.2	7.6	3.6	4.3	7.9	7.9	39.1
Transport and storage	2.0	1.8	1.7	1.3	0.5	1.7	1.7	15.3
Communication	1.1	1.0	1.0	0.7	0.3	1.0	1.0	9.6
Finance, property and business services	*5.3	*5.6	5.9	3.2	3.0	6.2	6.1	35.4
Public administration and defence(a)	6.1	6.0	6.0	3.4	2.6	6.0	5.9	53.5
Community services	15.4	15.8	16.0	6.3	9.7	16.0	16.2	122.8
Recreation, personal and other services(b)	5.9	7.3	4.8	2.3	2.4	4.7	4.8	26.6
Total all industries(c)	56.7	56.9	54.7	29.9	25.0	54.9	54.9	400.3

(a) Excludes members of permanent defence forces and employees of overseas embassies, consulates etc. (b) Excludes private households employing staff. (c) Includes employees of government agencies classified to Agriculture, forestry, fishing and hunting.

TABLE 22. EMPLOYED WAGE AND SALARY EARNERS, AUSTRALIAN CAPITAL TERRITORY — INDUSTRY

Industry	Number of employees ('000)						Gross earnings	
	September 1992	June 1993	July 1993	August 1993		September 1993	September Quarter 1993	
	Persons	Persons	Persons	Males	Females	Persons	Persons	\$m
Manufacturing	3.8	3.7	3.9	2.8	1.3	4.0	4.0	30.0
Electricity, gas and water	1.5	1.5	1.9	1.6	0.3	1.9	1.9	16.4
Construction	5.5	5.5	5.4	4.2	1.1	5.3	5.1	45.3
Wholesale trade	3.4	3.2	3.3	2.1	1.1	3.2	3.7	27.7
Retail trade	15.4	14.6	14.0	6.2	8.0	14.2	14.5	54.6
Transport and storage	3.7	3.7	3.9	3.2	0.7	3.9	3.9	40.9
Communication	1.6	2.1	2.1	1.3	0.7	2.0	2.0	18.8
Finance, property and business services	15.7	15.2	14.3	7.5	6.6	14.1	14.1	110.5
Public administration and defence(a)	33.9	36.1	35.0	19.9	15.1	35.0	34.9	386.0
Community services	37.4	38.2	37.8	14.0	24.6	38.5	39.1	315.2
Recreation, personal and other services(b)	13.4	11.3	10.4	5.3	5.7	10.9	11.5	45.1
Total all industries(c)	135.5	135.3	132.2	68.1	65.2	133.4	134.9	1,091.8

(a) Excludes members of permanent defence forces and employees of overseas embassies, consulates etc. (b) Excludes private households employing staff. (c) Includes Mining and employees of government agencies classified to Agriculture, forestry, fishing and hunting.

TABLE 23. EMPLOYED WAGE AND SALARY EARNERS, PRIVATE SECTOR -- EMPLOYER UNIT SIZE(a)

	<i>Less than 20 employees</i>		<i>20-99 employees</i>		<i>100 or more employees</i>		<i>Total</i>	
	<i>August 1993</i>	<i>September Quarter 1993</i>	<i>August 1993</i>	<i>September Quarter 1993</i>	<i>August 1993</i>	<i>September Quarter 1993</i>	<i>August 1993</i>	<i>September Quarter 1993</i>
	<i>Persons ('000)</i>	<i>Gross Earnings (\$m)</i>	<i>Persons ('000)</i>	<i>Gross Earnings (\$m)</i>	<i>Persons ('000)</i>	<i>Gross Earnings (\$m)</i>	<i>Persons ('000)</i>	<i>Gross Earnings (\$m)</i>
AUSTRALIA BY INDUSTRY								
Mining	5.9	50.0	7.8	99.0	47.8	708.1	61.6	857.2
Manufacturing	178.5	1,021.8	202.8	1,531.7	478.9	4,301.9	860.2	6,855.4
Electricity, gas and water	0.3	1.7	0.4	3.5	2.1	22.3	2.8	27.5
Construction	135.8	836.7	42.1	364.3	37.7	482.0	215.6	1,683.1
Wholesale trade	160.3	1,014.6	121.2	971.3	116.1	1,021.3	397.6	3,007.3
Retail trade	291.2	1,336.2	133.2	690.5	324.8	1,277.0	749.2	3,303.7
Transport and storage	72.2	433.3	49.1	384.1	47.1	441.2	168.4	1,258.7
Finance, property and business services	266.7	1,772.3	110.1	919.6	275.7	2,478.4	652.6	5,170.3
Community services	173.8	997.0	138.0	690.1	238.0	1,393.7	549.8	3,080.8
Recreation, personal and other services(b)	171.5	599.7	136.1	612.9	127.4	618.5	435.0	1,831.1
Total all Industries(c)	1,456.7	8,065.5	940.9	6,268.5	1,696.4	12,757.5	4,093.9	27,084.3
STATES AND TERRITORIES								
New South Wales	511.2	3,001.0	315.3	2,259.5	605.1	4,685.7	1,431.5	9,946.2
Victoria	358.9	1,918.9	258.6	1,709.8	457.2	3,566.3	1,074.8	7,195.0
Queensland	252.9	1,329.0	137.4	841.6	267.3	1,789.8	657.6	3,960.4
South Australia	107.7	546.2	93.3	612.3	132.9	935.9	333.9	2,094.3
Western Australia	144.9	839.5	82.8	532.1	172.2	1,393.3	399.9	2,764.8
Tasmania	41.9	204.4	24.9	139.4	35.9	234.5	102.7	578.4
Northern Territory	14.6	86.9	10.0	71.0	9.9	56.4	34.5	214.3
Australian Capital Territory	24.5	139.7	18.5	102.7	16.0	88.4	59.0	330.7

(a) See Appendix 2 and paragraph 11 of Explanatory Notes. (b) Excludes private households employing staff. (c) Includes employees of private enterprises classified in Communication.

TABLE 24. PAY PERIODICITY BY STATES AND TERRITORIES - SEPTEMBER QUARTER 1992
DISTRIBUTION OF GROSS WAGES AND SALARIES

State or Territory	Periodicity of pay									
	Weekly		Fortnightly		Monthly		Other(a)		Total	
	Total payments in quarter		Total payments in quarter		Total payments in quarter		Total payments in quarter		Total payments in quarter	
	\$m	%	\$m	%	\$m	%	\$m	%	\$m	%
New South Wales	6,162.8	42.1	6,253.3	42.7	2,099.5	14.3	124.2	0.8	14,639.7	100.0
Victoria	4,309.0	39.5	4,895.2	44.8	1,478.7	13.5	238.5	2.2	10,921.4	100.0
Queensland	2,607.5	45.7	2,455.5	43.1	496.1	8.7	142.4	2.5	5,701.5	100.0
South Australia	1,136.3	38.9	1,427.2	48.8	295.1	10.1	64.4	2.2	2,922.9	100.0
Western Australia	1,210.6	33.0	1,967.7	53.6	351.7	9.6	140.5	3.8	3,670.5	100.0
Tasmania	282.3	26.1	671.9	62.1	121.6	11.2	6.2	0.6	1,082.0	100.0
Northern Territory	128.4	24.9	358.3	69.4	29.1	5.6	0.2	-	516.0	100.0
Australian Capital Territory	220.1	19.2	818.6	71.3	108.7	9.5	1.5	0.1	1,148.9	100.0
Australia	16,056.9	39.5	18,847.7	46.4	4,980.3	12.3	717.9	1.8	40,602.8	100.0

(a) Includes daily, four weekly, quarterly, half-yearly, annual and irregular payments.

NOTE: There is a difference of \$152.1m in the September Quarter 1992 earnings estimate derived from the Survey of Employment and Earnings (Table 4), and the Survey of Pay Periods. This difference is entirely due to the difference in sampling for the two surveys and is not statistically significant.

EXPLANATORY NOTES

Introduction

This publication contains results of the quarterly Survey of Employment and Earnings (SEE) which was introduced in the September quarter 1983. The survey is designed to obtain, from employer units, information on numbers of wage and salary earners employed each month and their quarterly earnings. It replaced the civilian employees series, based principally on information obtained from payroll tax returns, which was discontinued after April 1980. The results of the September Quarter 1992 Survey of Pay Periods are also contained in this publication (see Table 24 and paragraphs 29 to 31 of these notes).

Scope of the survey

2. All wage and salary earners who received pay in any pay period ending within the quarter were represented in the survey, except: members of the Australian permanent defence forces; employees of enterprises in the private sector primarily engaged in agriculture, forestry, fishing and hunting; employees in private households employing staff; employees of overseas embassies, consulates, etc; employees based outside Australia.

3. An indicator of the number of employed wage and salary earners out of scope to the year ended June 1993 is shown in the following table as:

• New South Wales	66,700
• Victoria	36,600
• Queensland	48,700
• South Australia	17,500
• Western Australia	22,900
• Tasmania	8,500
• Northern Territory	3,900
• Australian Capital Territory	8,200
• Australia	213,200

Estimates of the number of employees in private sector agriculture and private households were derived from the Labour Force Survey while data relating to the number of permanent defence force members are based upon information supplied to the ABS by the Department of Defence.

Statistical unit

4. The statistical unit for the survey comprises all activities of an employer in a particular State. Each statistical unit was classified to an industry which reflected the predominant activity of the business in the State. In a small number of cases where an employer had a significant number of employees in more than one industry, a separate statistical unit was created for each industry. Periodically, a review is undertaken to determine whether existing enterprises which are split into separate statistical units should continue to report on that basis. In

addition, larger employers which are not currently split into separate statistical units are examined to decide whether they should be split for the purpose of reporting their employees. Any changes in reporting arrangements as a result of such review can have an impact on the industry estimates at the time of their implementation.

Survey methodology and design

5. This survey is conducted by mail each quarter from a sample of approximately 10,000 employer units. Of these, approximately 7,500 are in the private sector and 2,500 are in the public sector. However, since the December quarter 1991 survey, data for a number of Commonwealth Government and ACT Government departments have been collected electronically.

6. Information on monthly number of employees and quarterly earnings is collected each quarter. For the first and last month of each quarter, only the total number of persons is collected; for the mid month of each quarter, details of males and females, full-time and part-time are collected.

7. Private sector statistical units are stratified by State, industry, and number of employees. Public sector statistical units are further stratified by institutional sector and level of government. An equal probability sample is selected from each stratum.

Classification by industry

8. This publication presents statistics classified by industry. Each statistical unit is classified to an industry which reflects the predominant activity of the business in the State. In a small number of cases where a business has a significant number of employees in more than one industry, a separate statistical unit was created for each industry. Periodically, a review is undertaken to determine whether existing enterprises which are split into separate statistical units should continue to report on that basis.

9. The 1983 edition of the *Australian Standard Industrial Classification* Volume 1 (1201.0) and Volume 2 (1202.0) (ASIC) has been used to classify the statistical units in the survey. Statistics in this publication are presented at ASIC division level only. However, industry data is available at a finer industry level on request.

Standard Institutional Sector Classification of Australia (SISCA)

10. SISCA is a system for classifying institutional units by broad economic functions and is a key component of the general national accounting framework. For the purposes of these statistics the classification has been used to separate the public sector into public business enterprises (trading and financial) and general government enterprises. Certain public sector data have been classified by SISCA and are presented in Tables 8, 9 and 10.

Employer unit size classification

11. Data presented in Table 23 show the concentration of employees in employer units in three size ranges. Over a period, the composition of these categories will vary as some employer units migrate from one size group to another due to changes in their employment levels. This will affect changes over time in the distribution of employees by size of employer unit.

Reliability of estimates

12. Estimates are subject to sampling and non-sampling errors. For more information refer to Appendix 1 - Technical Note.

Interpretation of estimates of movements

13. While estimates of employed wage and salary earners are presented in this publication for each month of the quarter, the survey is conducted quarterly and the sample of employer units is updated each quarter to reflect changes in the ABS register of business units, from which the sample is selected. These changes arise from the emergence of new businesses, takeovers and mergers, changes to industry classification, changes in the number of employees, and businesses which have ceased operations. Such updating of the register can contribute to sudden changes in the estimates of employed wage and salary earners, and earnings.

14. Estimates of monthly movements within each quarter arise solely from changes in reported number of employees by employer units but movements between quarters also reflect changes resulting from updating the survey sample.

Trend Estimates

15. The ABS considers that trend estimates provide a more reliable guide to the underlying direction of the data, and are more suitable than either the seasonally adjusted or original data for most business decisions and policy advice.

16. The trend estimates in this publication, obtained by dampening out the irregular component from the seasonally adjusted series, are calculated using a centred 23-term Henderson moving average of the seasonally adjusted series. Estimates for the three most recent quarters cannot be calculated using this centred average method; instead an asymmetric average is used. This can lead to revisions in the trend estimates for the last three quarters when data become available for later quarters. Revisions of trend estimates will also occur with revisions to the original data and re-estimation of seasonal adjustment factors.

17. If a series is highly volatile then the trend estimates will be subject to greater revision for the latest few quarters as data become available. However, it is important to note that this does not make the trend series inferior to the seasonally adjusted or original series. In such cases the effect of the irregular component on overall

movements will remain in the seasonally adjusted and the original estimates but not in the trend series.

18. For information about ABS procedures for deriving trend estimates and analysis of advantages of using them over alternative techniques for monitoring trends, refer to the three ABS Information Papers:

- *A Guide to Interpreting Time Series - Monitoring 'Trends': an Overview* (1348.0);
- *A Guide to Smoothing Series - Estimates of 'Trend'* (1316.0); and
- *Time Series Decomposition - An Overview* (1317.0).

Two feature articles which have appeared in the ABS monthly publication *Australian Economic Indicators* may also be of interest:

- *Picking Turning Points in the Economy* (April 1991); and
- *Smarter Data Use* (March 1992).

Seasonal Adjustment

19. Seasonal adjustment is a means of removing the estimated effects of normal seasonal variation from the series so that the effects of other influences on the series can be more clearly recognised. Seasonal adjustment does not aim to remove the irregular or non-seasonal influences which may be present in any particular month. Influences that are volatile or unsystematic can still make it difficult to interpret the movement of the series even after adjustment for seasonal variation. This means that quarter-to-quarter movements of seasonally adjusted estimates may not be reliable indicators of trend behaviour.

20. The series have been seasonally adjusted from September 1983 and the historical series can be made available on request. The seasonal factors are reviewed annually to take account of each additional year's original data. The most recent review took place in the March quarter 1993.

21. Details about the method of seasonal adjustment of these series are available on request.

Comparability of results with the Labour Force Survey

22. The ABS publishes a number of series of employment estimates.

23. The monthly Labour Force Survey (LFS) collects data by interview from a sample of about 29,000 private and non-private dwellings, using trained interviewers. Self-employed persons are included in the Labour Force Survey. The estimates are published in *The Labour Force*,

Australia, Preliminary (6202.0) and *The Labour Force, Australia* (6203.0).

24. There are conceptual and methodological reasons for differences in the estimates produced by the two surveys. These are discussed in an *Information Paper: Comparison of Employment Estimates from the Labour Force Survey and the Survey of Employment and Earnings* (6263.0). The two series should be seen as complementary and movements in them have generally been broadly consistent. In recent time periods the two surveys have shown some divergence in the estimates produced.

25. This series differs in several important ways from the former payroll tax-based civilian employees series, and estimates of employed wage and salary earners obtained from the LFS. It provides an estimate of the number of jobs occupied by people, whereas the other two series provide estimates of the number of people in jobs. For this series, data are obtained directly from a sample survey of employer units drawn from the ABS register of business units, which is more complete than the coverage provided by employers subject to payroll tax. Comparability with LFS estimates is affected by the use of a different survey methodology and definitions. In addition, because of unavoidable time delays, which can vary across States, lags occur between the birth of new businesses and their appearance on the ABS register. They will not be represented in the sample selected from the register for one or two quarters after such businesses have commenced operation. As a consequence, estimates of movements in this series will lag those produced from the LFS, particularly at a time of upward movement in the business cycle. A detailed description of the comparability between the SEE series, the former payroll tax-based Civilian Employees series and the series provided by the LFS is presented in the *Information Paper: New Statistical Series: Employment, Average Weekly Earnings, Job Vacancies and Overtime* (6256.0). Additional detail on the differences between the SEE and the LFS series appears in the *Information Paper: Comparison of Employment Estimates from the Labour Force Survey and the Survey of Employment and Earnings* (6263.0), and in the supplement to the December 1986 issue of the *Treasury Roundup*.

26. Separate estimates of full-time and part-time employees are included in Table 11. For definitions of these terms, see Appendix 2 - Glossary. This table was first published in the June quarter 1987 issue of this publication and has not been published for previous quarters back to September 1983. This information is available on request. For the reasons outlined above in paragraph 26, it is difficult to compare estimates of full-time and part-time employees derived from the SEE with those produced from the LFS. Generally, the number of full-time employees is higher in the LFS series, and the number of part-time employees is higher in the SEE series. In the LFS, a person who works more than 35 hours a week in total in two (or more) part-time jobs is classified as working full-time. However, in this situation,

the SEE would show two part-time jobs as having been filled.

27. The ABS considers that the Labour Force series provides the better indicator of overall employment movements at the Australian and State level. The aggregate employment estimates in the quarterly National Accounts are based on that source.

Comparability of results with the Average Weekly Earnings survey

28. The SEE collects total quarterly employee earnings primarily for use in estimating the gross domestic product component of the Australian National Accounts. Whilst average employee earnings can be derived from these data, the results will not be comparable with those from the Survey of Average Weekly Earnings (AWE) published in *Average Weekly Earnings, States and Australia* (6302.0). The SEE collects the sum of employee earnings paid in all pay periods ending in a quarter and the results will be affected by the varying number of pay periods from quarter to quarter, whereas the AWE relates to a specified pay period within a quarter and is not subject to such influences. In addition, certain types of payments within the scope of the SEE, such as retrospective pay, pay in advance, leave loadings and severance, termination and redundancy payments are specifically excluded from the AWE. The SEE earnings data are also subject to seasonal variations particularly in December and March quarters due to the incidence of holidays taken in January being paid in advance and the earnings being reported in December quarter figures.

Survey of Pay Periods

29. The Survey of Pay Periods was conducted in respect of September Quarter 1992. The survey was designed to obtain from employers, information on the timing and frequency of pay periods and the gross wages and salaries paid. The previous survey of pay periods was conducted in respect of September Quarter 1988.

30. The survey was conducted by mail. A sample of 4800 (private and government) employers was selected from the ABS register of businesses to ensure adequate State and industry representation.

31. Table 24 contains information on the pay period distribution of gross wages and salaries for each State and Territory for September Quarter 1992. Industry data on the same basis is available on request by contacting Yvonne Ledetzky on (06) 252 5141.

Related publications

32. Users may also wish to refer to the following publications which are available on request:

The Labour Force, Australia (6203.0) — issued monthly

Information Paper: Comparison of Employment Estimates from the Labour Force Survey and the Survey of Employment and Earnings (6263.0) — issued 11 July 1985

Average Weekly Earnings, Australia (Preliminary) (6301.0) and *Average Weekly Earnings, States and Australia* (6302.0) — issued quarterly

Labour Statistics, Australia (6101.0) — issued annually

A Guide to Labour Statistics (6102.0) — issued 10 February 1986

Small Business in Australia 1993 (1321.0) — issued November 1993

Labour Force Projections, Australia, 1992-2005 (6260.0) — issued 11 November 1991.

33. Current publications produced by the ABS are listed in the *Catalogue of Publications and Products, Australia* (1101.0). The ABS also issues, on Tuesdays and Fridays, a *Publications Advice* (1105.0) which lists publications to

be released within the next few days. The Catalogue and Publications Advice are available from any ABS office.

Unpublished statistics

34. In some cases, the ABS can also make available other information which is not published. This information may be made available in one or more of the following forms: microfiche, photocopy, data tape, computer printout, diskette, clerically-extracted tabulation. Generally, a charge is made for providing unpublished information. Inquiries should be made to the contact officer whose name appears in the Inquiries box at the front of this publication.

Symbols and other usages

- nil or rounded to zero
- r revised
- * subject to sampling variability too high for most practical purposes. *See paragraph 3 of Appendix 1 - Technical Note*

Where figures have been rounded, discrepancies may occur between sums of the component items and totals.

APPENDIX 1 - TECHNICAL NOTE

Survey of Employment and Earnings

Reliability of estimates

Estimates for both the private and public sectors in this publication are subject to sampling variability because they are based on information relating to a sample of employer units rather than a full enumeration, (i.e. they may differ from the figures that would have been produced if the information had been obtained from all employer units). This difference, called sampling error, should not be confused with inaccuracy that may occur because of imperfections in reporting by respondents or in processing by the ABS; such inaccuracy is referred to as non-sampling error and may occur in any enumeration, whether it be a full count or sample. Efforts have been made to reduce the non-sampling error by careful design of questionnaires, detailed checking of returns and quality control of processing.

2. The sampling error associated with any estimate can be estimated from the sample results. One measure of sampling error is given by the *standard error* which indicates the degree to which an estimate may vary from the value that would have been obtained from a full enumeration (the 'true' figure). There are about two chances in three that a sample estimate differs from the true value by less than one standard error, and about nineteen chances in twenty that the difference will be less than two standard errors.

3. If the standard error of an estimate is large relative to the size of the estimate, the usefulness of that estimate is *seriously* impaired. For the tables in this publication, estimates with standard errors greater than 25 per cent of the estimate have been labelled with an asterisk.

4. Standard errors of estimates of *level*, by industry, are shown in Table A for the private sector and Table B for the public sector and relate only to the third month of the quarter. As the survey is conducted quarterly from a common sample of employer units, who report details of employees for each month of the quarter, standard errors on all estimates for total persons employed in each month are of a similar magnitude.

5. Standard errors of estimates of *movements*, provide a measure of the reliability of changes in the level of an estimate. Tables A and B show standard errors for movements in the level of estimates for the private and public sectors respectively for persons between the third month of successive quarters. Annual movement standard errors are also shown and relate to March 1992 - March 1993 movements.

6. An example of the use of standard error on *levels* is as follows. If the estimated number of wage and salary earners was 5,800,000 with a standard error of 34,000, then there would be about two chances in three that a full enumeration would have given a figure in the range 5,766,000 to 5,834,000 and about nineteen chances in twenty that it would be in the range 5,732,000 to 5,868,000.

7. An example of the use of standard error on *movements* is as follows. If the estimated standard error for a quarterly change estimate of wage and salary earners was 15,000 and the quarterly change estimate between two quarters was 40,000 persons, then there would be about two chances in three that a full enumeration would have given a quarterly change estimate in the range 25,000 to 55,000 persons and about nineteen chances in twenty that it would be in the range 10,000 to 70,000 persons.

8. Quarterly movements in estimates of employed wage and salary earners are considered to be statistically significant where they exceed two standard errors.

9. Standard errors for earnings are approximately the same relative size as standard errors for number of employees. Detailed standard errors for both employment and earnings are available on request.

Survey of Pay Periods

10. Information about estimates of standard errors for this survey can be obtained on request to the ABS (see contact information in paragraph 31 of the Explanatory Notes).

TABLE A. EMPLOYED WAGE AND SALARY EARNERS, STATES AND TERRITORIES — PRIVATE SECTOR :
STANDARD ERRORS, SEPTEMBER 1993, PERSONS
(*000)

Industry	NSW	Vic.	Qld	SA	WA	Tas.	NT	ACT	Wst.
LEVEL									
Mining	0.9	0.6	2.3	0.3	1.3	0.1	0.5	—	2.9
Manufacturing	11.4	11.4	8.3	3.8	4.4	1.2	0.2	0.2	19.1
Construction	8.7	6.0	5.3	1.7	6.9	0.9	1.5	0.9	13.9
Wholesale trade	17.4	7.4	6.6	4.1	6.0	1.1	0.3	0.6	21.4
Retail trade	12.5	11.0	10.9	5.2	6.3	1.5	0.6	1.2	21.5
Transport and storage	6.9	6.9	5.1	5.1	2.4	0.7	0.2	0.3	12.4
Finance, property and business services	10.8	11.7	8.1	5.7	5.0	1.0	1.7	1.6	19.5
Community services	11.2	13.6	8.5	5.5	10.1	3.1	0.7	1.8	23.0
Recreation, personal and other services(a)	8.6	13.7	6.8	3.9	7.6	1.1	0.8	1.3	19.6
Total all industries	32.0	30.0	21.8	12.8	18.2	4.3	2.7	3.2	54.2
QUARTERLY MOVEMENT									
Mining	0.8	0.6	1.9	0.2	1.4	—	0.1	—	2.5
Manufacturing	12.1	12.5	8.1	4.7	4.6	1.7	0.1	0.2	20.3
Construction	7.0	5.3	3.8	1.4	5.9	0.6	0.6	0.4	11.4
Wholesale trade	10.2	5.4	5.9	3.3	3.6	0.7	0.2	0.5	13.9
Retail trade	13.9	11.6	23.0	4.6	5.8	3.5	0.5	1.2	30.4
Transport and storage	5.8	5.4	4.0	3.7	1.5	0.5	0.1	0.1	9.7
Finance, property and business services	8.4	10.4	6.8	4.8	5.0	0.9	0.5	1.1	16.6
Community services	9.0	10.9	7.7	4.2	9.2	2.4	0.2	0.7	19.2
Recreation, personal and other services(a)	7.6	12.0	7.7	3.5	7.7	1.1	0.8	1.3	18.3
Total all industries	27.1	27.4	28.8	11.0	16.6	4.9	1.3	2.3	52.4
ANNUAL MOVEMENT(b)									
Mining	0.9	0.9	2.1	0.2	1.3	0.1	0.4	—	2.8
Manufacturing	6.4	9.1	4.2	2.3	3.5	0.6	0.2	0.6	12.6
Construction	5.1	7.5	4.1	1.3	4.8	0.6	2.1	1.2	11.4
Wholesale and Retail trade	16.2	10.6	8.9	6.3	4.0	2.1	1.1	1.7	23.0
Transport and storage	5.0	4.8	2.1	4.7	2.4	0.3	1.4	0.3	9.1
Finance, property and business services	12.3	6.5	6.5	3.2	5.8	0.8	2.2	1.2	16.9
Community services	7.3	10.5	7.1	4.5	3.4	1.0	1.5	1.0	15.9
Recreation, personal and other services(a)	12.0	6.8	5.5	3.2	3.8	0.9	1.1	1.6	15.8
Total all industries	26.5	21.8	15.9	10.5	10.9	2.8	4.0	3.1	41.2

(a) Excludes private households employing staff. (b) See paragraph 5 in Appendix 1.

TABLE B. EMPLOYED WAGE AND SALARY EARNERS, STATES AND TERRITORIES — PUBLIC SECTOR :
STANDARD ERRORS, SEPTEMBER 1993, PERSONS
(*000)

Industry	NSW	Vic.	Qld	SA	WA	Tas.	NT	ACT	Aust.
LEVEL									
Agriculture, forestry, fishing and hunting	—	—	—	—	—	—	—	—	—
Mining	—	—	—	—	—	—	—	—	—
Manufacturing	1.0	1.3	0.1	—	—	—	—	—	1.7
Electricity, gas and water	0.1	0.2	0.2	—	—	0.3	—	—	0.4
Construction	—	0.7	—	—	—	—	—	—	0.7
Wholesale trade	—	—	—	—	—	—	—	—	—
Retail trade	—	—	—	—	—	—	—	—	—
Transport and storage	0.2	1.1	—	—	—	—	—	—	—
Communication	—	—	—	—	—	—	—	—	1.2
Finance, property and business services	1.1	0.5	0.1	0.1	—	—	—	—	1.2
Public administration and defence(a)	2.1	2.3	1.3	0.9	0.6	0.3	—	—	3.6
Community services	2.1	1.6	0.6	0.6	0.8	—	—	—	2.9
Recreation, personal and other services	1.6	—	—	0.2	—	—	—	—	1.6
Total all industries	1.6	2.6	1.5	0.9	1.0	0.4	—	—	3.7
QUARTERLY MOVEMENT									
Agriculture, forestry, fishing and hunting	—	—	—	—	—	—	—	—	—
Mining	—	—	—	—	—	—	—	—	—
Manufacturing	0.3	1.8	0.1	—	—	—	—	—	1.8
Electricity, gas and water	—	0.1	0.1	—	—	0.2	—	—	0.2
Construction	—	0.5	—	—	—	—	—	—	0.5
Wholesale trade	—	—	—	—	—	—	—	—	—
Retail trade	—	—	—	—	—	—	—	—	—
Transport and storage	0.2	0.8	—	—	—	—	—	—	0.8
Communication	0.1	—	—	—	—	—	—	—	0.1
Finance, property and business services	0.4	0.2	0.1	0.1	—	—	—	—	0.5
Public administration and defence(a)	—	4.4	1.0	0.1	0.7	—	—	—	4.6
Community services	0.8	1.3	0.5	0.1	0.1	—	—	—	1.6
Recreation, personal and other services	0.5	0.1	—	0.2	—	—	—	—	0.5
Total all industries	0.4	4.5	1.2	0.2	0.7	0.2	—	—	4.7
ANNUAL MOVEMENT(b)									
Agriculture, forestry, fishing and hunting	—	—	—	—	—	—	—	—	—
Mining	—	—	—	—	—	—	—	—	—
Manufacturing	0.5	0.8	—	—	—	—	—	—	1.0
Electricity, gas and water	0.1	0.1	0.1	—	—	—	—	—	0.2
Construction	—	0.6	—	—	—	—	—	—	0.6
Wholesale and Retail trade	—	—	—	0.2	—	—	—	—	0.2
Transport and storage	0.1	0.6	0.1	—	—	—	—	—	0.7
Communication	—	—	—	5.5	0.1	—	—	—	5.5
Finance, property and business services	0.6	0.3	—	—	—	0.1	—	—	0.6
Public administration and defence(a)	0.5	1.1	2.1	0.7	0.2	0.2	—	—	2.5
Community services	2.4	0.9	0.9	0.7	0.3	—	0.2	—	2.9
Recreation, personal and other services	0.5	—	—	0.2	—	—	—	—	0.6
Total all industries	2.8	1.9	2.3	5.5	0.3	0.2	0.2	0.1	6.9

(a) Excludes members of permanent defence forces and employees of overseas embassies, consulates etc. (b) See paragraph 5 in Appendix 1.

APPENDIX 2 - GLOSSARY

Commonwealth government employees. Persons employed by all departments, agencies and authorities created by or reporting to the Commonwealth Parliament, including trading bodies such as banks, airlines and communications bodies. Those bodies run jointly by Commonwealth and State governments are classified to Commonwealth.

Employer units are the statistical units which make up the population from which the sample was drawn (see paragraph 4 of the Explanatory Notes).

Employer unit size. To derive estimates of employer unit size, each of the approximately 7,500 private sector employer units is allocated a size classification based on the number of employees actually reported for the middle month of the quarter. The size classification reflects the size of an enterprise in a particular State/Territory and not necessarily the size of an enterprise Australia wide.

Full-time employees. Permanent, temporary and casual employees who normally work the agreed or award hours for a full-time employee in their occupation and who received pay for any part of the reference period. If agreed or award hours do not apply, employees are regarded as full-time if they ordinarily work 35 hours or more per week.

General government enterprises. Public sector enterprises mainly engaged in the production of goods and services, outside the normal market mechanisms, providing these goods and services to the general public. The costs of operations are often financed from public revenues. e.g. Government Departments.

Gross earnings. Payments to employees before tax and other items (such as superannuation) are deducted. They comprise amounts paid from interstate or overseas; ordinary time and overtime earnings; overaward payments; penalty payments, shift and other remunerative allowances; commissions and retainers; bonuses and similar payments; payments under incentive or piecework; payments under profit-sharing schemes; leave loadings; annual and long service leave payments; sick leave payments; advance and retrospective payments; salaries and fees paid to company directors, members of boards, committees, commissions, councils, etc.; amounts paid to employees on workers' compensation who continue to be paid through the payroll; and severance, termination and redundancy payments.

Industry. Industry is classified according to the *Australian Standard Industrial Classification (ASIC) 1983 Edition* (1201.0).

Institutional sector. Institutional sector is classified according to the *Standard Institutional Sector Classification of Australia (SISCA) 1987 Edition* (1218.0).

Local government employees. Persons employed by municipalities and shires and other local authorities created by or subject to the provisions of local government legislation, such as county councils in New South Wales.

Number of employees. All wage and salary earners who received pay for any part of the relevant pay period. All permanent, temporary, casual, managerial and executive

employees are included. Part-time and casual employees who may have worked only a few hours during the reference period are included. Employees on *paid* leave and those employees on workers' compensation who continue to be paid through the employer's payroll are also included. Casual employees who work on an irregular basis and who were not paid during the relevant pay period, employees on leave without pay, on strike or stood down without pay for the whole of the pay period are excluded.

Part-time employees. Permanent, temporary and casual employees who are not classified as full-time employees as defined.

Payrolls. *Weekly and fortnightly payrolls* comprise a series of consecutive pay periods of equal length, which end on the same day of every week or fortnight. A *monthly payroll* comprises a series of consecutive pay periods which end on the last day of each calendar month. *Other payrolls* may include for example, daily, four weekly, quarterly, annual, irregular payments or a payroll comprising pay periods ending on the last working day of the month.

Public employees. Administrative employees and all other employees of Commonwealth, State and Local government businesses and financial undertakings engaged in services such as railways, road transport, banks, postal and telecommunications, air transport, education, radio, television, police, public works, factories, marketing authorities, hospitals and welfare institutions.

Public financial enterprises. Public sector enterprises actively involved in financial market transactions such as borrowing and lending. Excluded are those public bodies whose funds flow directly to or from general government revenue.

Public trading enterprises. Public sector enterprises predominantly engaged in the production of goods and services with an intention of maximising profits and financial returns with most operating costs being derived from trading activities.

Reference period for the number of employees. The last pay period ending on or before the third Friday in each month.

Reference period for earnings. All pay periods for which the end of the pay period falls within the quarter.

Sector. Public sector includes local government authorities and all government departments, agencies and authorities created by, or reporting to the Commonwealth and State Parliaments. All remaining employees are classified as private sector.

State government employees. Persons employed by all State government departments and authorities created by, or reporting to, State Parliaments, including organisations for which the Commonwealth has assumed financial responsibility, e.g. universities. Following self-government, the Northern Territory and the Australian Capital Territory administrations have been classified to 'State' governments. Employees of State governments employed interstate are included in the estimates of the State in which they are based.

Small Business in Australia

SMALL BUSINESS IN AUSTRALIA, 1993

The bulletin *Small Business in Australia, 1993* is the third publication to bring together statistics on small business from a variety of ABS and other sources.

Small Business in Australia aims to meet the demands of users requiring statistics on the structure of the Australian small business sector, including its relative significance as measured in terms of its size, economic activity and performance.

The first edition of this publication presented data from 1983-84 to 1986-87 while the second provided data through to 1989-90. The current issue provides updates through to 1991-92.

The *Small Business in Australia* bulletin includes the following information:

- A statistical overview of the structure of Australian business in 1991-92.
- Details by size, employment and industry are provided.
- Growth trends in the small business sector since 1983-84.

- Industry details for very small businesses (generally defined as those with employment less than 5).
- Statistics relating to the earnings, labour costs, training expenditure, bankruptcy rates and research and development activities of small business.
- Details on the comparative structure, activity and economic performance of small businesses across industries.
- Comparisons of the relative size and characteristics of components of the small business sector for selected countries.

The statistics are presented within the following broad industry classifications:

- Mining
- Manufacturing
- Construction
- Wholesale trade
- Retail trade
- Transport and storage
- Finance, property and business services
- Community services
- Recreational, personal and other services

A more limited range of statistics for the Agricultural industry are also included.

Order today

SMALL BUSINESS IN AUSTRALIA, 1993
Catalogue Number 1321.0

\$45.00 per copy (includes postage).

My cheque for \$ _____ is enclosed.
Cheques payable to the Australian Bureau of Statistics

Please bill my

Bankcard Mastercard Visa

Card number _____ Expiry date / _____
□□□□ □□□□ □□□□ □□□□

for \$ _____

Cardholder's Name _____

Cardholder's Signature _____

SEND MY ORDER TO:

Name _____

Position _____

Organisation _____

Address _____

Postcode _____

Phone _____

RETURN TO:

Reply Paid 4
ABS Bookshop
PO Box 10

Small Business in Australia

SMALL BUSINESS IN AUSTRALIA, 1993

The bulletin Small Business in Australia, 1993 is the third publication to bring together statistics on small business from a variety of ABS and other sources.

Small Business in Australia aims to meet the demands of users requiring statistics on the structure of the Australian small business sector, including its relative significance as measured in terms of its size, economic activity and performance.

The first edition of this publication presented data from 1983-84 to 1986-87 while the second provided data through to 1989-90. The current issue provides updates through to 1991-92.

The Small Business in Australia bulletin includes the following information:

- A statistical overview of the structure of Australian business in 1991-92.
- Details by size, employment and industry are provided.
- Growth trends in the small business sector since 1983-84.

- Industry details for very small businesses (generally defined as those with employment less than 5).
- Statistics relating to the earnings, labour costs, training expenditure, bankruptcy rates and research and development activities of small business.
- Details on the comparative structure, activity and economic performance of small businesses across industries.
- Comparisons of the relative size and characteristics of components of the small business sector for selected countries.

The statistics are presented within the following broad industry classifications:

- Mining
- Manufacturing
- Construction
- Wholesale trade
- Retail trade
- Transport and storage
- Finance, property and business services
- Community services
- Recreational, personal and other services

A more limited range of statistics for the Agricultural industry are also included.

Order today

SMALL BUSINESS IN AUSTRALIA, 1993
Catalogue Number 1321.0

\$45.00 per copy (includes postage).

My cheque for \$ _____ is enclosed.
Cheques payable to the Australian Bureau of Statistics

Please bill my

Bankcard Mastercard Visa

Card number _____ Expiry date / _____

for \$ _____

Cardholder's Name _____

Cardholder's Signature _____

SEND MY ORDER TO:

Name _____

Position _____

Organisation _____

Address _____

Postcode _____

Phone _____

RETURN TO:
Reply Paid 4
ABS Bookshop
PO Box 10





For more information ...

The ABS publishes a wide range of statistics and other information on Australia's economic and social conditions. Details of what is available in various publications and other products can be found in the *ABS Catalogue of Publications and Products* available at all ABS Offices (see below for contact details).

Information Consultancy Service

Information tailored to special needs of clients can be obtained from the Information Consultancy Service available at ABS Offices (see Information Inquiries below for contact details).

National Dial-a-Statistic Line

0055 86 400

(Steadycom P/L; premium rate 25c/21.4 secs.)

This number gives 24-hour access, 365 days a year for a range of statistics.

Electronic Data Services

Selections of most frequently requested statistics are available, updated daily, on DISCOVERY (Key *656#). For more details on electronic data services available, contact Information Services in any of the ABS Offices (see Information Inquiries below for contact details).

Bookshops and Subscriptions

There are over 400 titles of various publications available from ABS bookshops in all ABS Offices (see below Bookshop Sales for contact details). The ABS also provides a subscription service through which nominated publications are provided by mail on a regular basis at no additional cost (telephone Publications Subscription Service toll free on 008 02 0608 Australia wide).

Sales and Inquiries

Regional Offices	Information Inquiries	Bookshop Sales
SYDNEY (02)	268 4611	268 4620
MELBOURNE (03)	615 7000	615 7829
BRISBANE (07)	222 6351	222 6350
PERTH (09)	323 5140	323 5307
ADELAIDE (08)	237 7100	237 7582
HOBART (002)	20 5800	20 5800
CANBERRA (06)	207 0326	207 0326
DARWIN (089)	43 2111	43 2111
National Office		
ACT (06)	252 6007	008 020 608

ABS Email Addresses

Keylink	STAT.INFO/ABS
X.400	(C:AU,A:TELEMEMO,O:ABS,SN:INFO,FN:STAT)
Internet	STAT.INFO@ABS.TELEMEMO.AU



Information Services, ABS, PO Box 10, Belconnen ACT 2616



2624800009933